



Home » Video Card Benchmarks » Video Card List

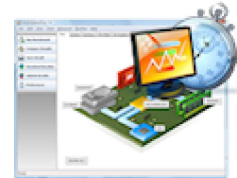
CPU Benchmarks Video Card Benchmarks Hard Drive Benchmarks RAM PC Systems Android iOS / iPhone

Videocard Benchmarks

Over 1,000,000 Video Cards Benchmarked



----Select A Page ----



How does your Video Card compare?

Add your card to our benchmark charts with **PerformanceTest V9!**

Video Card List

Below is an alphabetical list of all Video Card types that appear in the charts. Clicking on a specific Video Card will take you to the chart it appears in and will highlight it for you.

Ad closed by Google

Stop seeing this ad Why this ad?

 Find Videocard

Videocard Name	Passmark G3D Mark (higher is better)	Rank (lower is better)	Videocard Value (higher is better)	Price (USD)
128 DDR Radeon 9700 TX w/TV-Out	44	1379	NA	NA
128MB DDR Radeon 9800 Pro	66	1317	NA	NA
128MB RADEON X600 SE	49	1362	NA	NA
15DD	2017	257	NA	NA
256MB RADEON X600	67	1309	NA	NA
7900 MOD - Radeon HD 6520G	610	764	NA	NA
A6 Micro-6500T Quad-Core APU with RadeonR4	220	1055	NA	NA
ABIT Siluro T400	3	1574	NA	NA
ALL-IN-WONDER 9000	4	1546	NA	NA
ALL-IN-WONDER RADEON 8500DV	5	1540	NA	NA
All-in-Wonder X1900	127	1162	NA	NA
ALL-IN-WONDER X800 GT	84	1265	NA	NA
ASUS EAH4870x2	496	874	NA	NA
Barco MXRT 5400	1334	353	NA	NA
Barco MXRT 5450	992	476	NA	NA
Barco MXRT 7500	4319	122	NA	NA
Chell 1.7b for Intel 945G	12	1492	NA	NA
Chell 1.7b for Intel G33/G31	16	1481	NA	NA
Chell 1.7b for Intel GMA 3150	4	1555	NA	NA
Chell 1.7b for Mobile Intel 945	6	1514	NA	NA
Chell 1.8a for Mobile Intel 965	22	1459	NA	NA
Chell 1.8b for Intel 945G	1	1624	NA	NA
Chell 1.8b for Intel G33/G31	7	1510	NA	NA
Chell 1.8b for Mobile Intel 945	2	1615	NA	NA
Chell 1.8b for Mobile Intel 965	14	1484	NA	NA

Videocard Name	Passmark G3D Mark (higher is better)	Rank (lower is better)	Videocard Value (higher is better)	Price (USD)
Chipset Intel G41 Express	57	1343	NA	NA
Device	3545	153	NA	NA
EAH6450	264	1022	NA	NA
Extreme AX850 PRO	120	1172	NA	NA
Famille de jeu de puces Express Intel 946GZ	7	1507	NA	NA
FireGL T2-128	30	1431	NA	NA
FireGL V3100	52	1350	NA	NA
FireGL V3200	84	1263	NA	NA
FireGL V3300	70	1300	NA	NA
FireGL V3350	66	1311	NA	NA
FireGL V3400	103	1213	NA	NA
FireGL V3600	180	1109	1.12	\$160.99*
FireGL V5100	92	1245	NA	NA
FireGL V5200	113	1188	NA	NA
FireGL V5600	341	969	NA	NA
FireGL V7200	113	1185	NA	NA
FireGL V7300	128	1160	0.11	\$1,189.99*
FireGL V7350	122	1169	0.08	\$1,523.99*
FireGL V7600	615	758	NA	NA
FireGL V7700	660	713	3.77	\$174.99*
FireGL V8650	550	827	1.67	\$329.99*
FireGL X1	59	1337	NA	NA
FireMV 2200 PCIe	36	1407	0.40	\$89.99*
FireMV 2250	45	1372	0.43	\$105.99*
FireMV 2260	117	1178	1.12	\$104.99*
Videocard Name	Passmark G3D Mark (higher is better)	Rank (lower is better)	Videocard Value (higher is better)	Price (USD)
FireMV 2400 PCIe	13	1486	NA	NA
FirePro 2260	113	1189	NA	NA
FirePro 2270	226	1052	2.15	\$105.06*
FirePro 2450	51	1351	0.19	\$278.00*
FirePro 2460	215	1060	0.80	\$269.99*
FirePro 3D V3700	184	1103	2.17	\$84.99*
FirePro 3D V3750	350	962	6.90	\$50.88*
FirePro 3D V3800	474	889	3.16	\$149.99*
FirePro 3D V4800	1079	432	6.75	\$159.99*
FirePro 3D V5700	552	823	1.73	\$319.99*
FirePro 3D V5800	1451	329	3.92	\$369.99*
FirePro 3D V7750	540	843	1.54	\$350.00*
FirePro 3D V7800	1809	283	3.02	\$599.99*
FirePro 3D V8700	1198	392	5.99	\$199.99*
FirePro 3D V8750	1271	374	1.03	\$1,230.99*
FirePro 3D V8800	2499	212	5.88	\$424.99*
FirePro 3D V9800	2811	195	1.13	\$2,499.00*
FirePro M2000	610	765	NA	NA
FirePro M4000	1582	309	NA	NA
FirePro M4000 Mobility Pro	1721	295	NA	NA
FirePro M40003	1364	346	NA	NA
Firepro M4100	1062	435	NA	NA
FirePro M4150	1102	423	NA	NA

Videocard Name	Passmark G3D Mark (higher is better)	Rank (lower is better)	Videocard Value (higher is better)	Price (USD)
FirePro M4170	1086	427	NA	NA
FirePro M5100	2097	245	NA	NA
FirePro M5950	1314	360	NA	NA
FirePro M6000 Mobility Pro	1721	294	NA	NA
FirePro M6100	2903	188	NA	NA
FirePro M7740	657	716	NA	NA
FirePro S7000	4166	129	NA	NA
FirePro V3900	870	543	6.70	\$129.99*
FirePro V4800	1204	388	NA	NA
FirePro V4900	1300	365	8.97	\$144.99*
FirePro V5700	464	898	NA	NA
FirePro V5900	1526	321	4.77	\$319.99*
FirePro V7000 Adapter	3161	169	NA	NA
FirePro V7900	2717	202	22.65	\$119.99*
FirePro V9800 Adapter	2730	200	NA	NA
FirePro W2100	899	528	7.89	\$113.99*
FirePro W4100	1616	307	10.10	\$159.99*
FirePro W4100 Adapter	1740	291	NA	NA
FirePro W4170M	1307	363	NA	NA
FirePro W4190M	1269	376	NA	NA
FirePro W4300	2894	189	12.06	\$239.99*
FirePro W5000	3059	179	7.05	\$434.00*
FirePro W5100	3002	185	10.76	\$279.13*
FirePro W5130M	1655	302	NA	NA
FirePro W5170M	2191	236	NA	NA
FirePro W600	1728	293	3.60	\$479.99*
Videocard Name	Passmark G3D Mark (higher is better)	Rank (lower is better)	Videocard Value (higher is better)	Price (USD)
FirePro W7000	4245	125	7.45	\$569.99*
FirePro W7000 Adapter	4026	133	NA	NA
FirePro W7100	5373	86	8.53	\$629.99*
FirePro W7100 Adapter	5647	79	NA	NA
FirePro W7170M	4643	107	NA	NA
FirePro W8000	4418	114	4.21	\$1,048.99*
FirePro W8000 Adapter	4751	102	NA	NA
FirePro W8100	5959	70	5.96	\$999.99*
FirePro W8100 Graphic Adapter	8219	46	NA	NA
FirePro W9000	5394	84	1.57	\$3,443.99*
FirePro W9100	7136	60	2.60	\$2,749.99*
FirePro W9100 Adapter	8299	45	NA	NA
FireStream 9250	1164	402	NA	NA
FireStream 9270	1341	351	NA	NA
GeForce 205	126	1164	NA	NA
GeForce 210	173	1113	5.44	\$31.99
GeForce 256	5	1543	0.12	\$42.04*
GeForce 305M	190	1096	NA	NA
GeForce 310	205	1079	1.90	\$108.35*
GeForce 310M	211	1067	NA	NA
GeForce 315	255	1035	7.73	\$32.99*
GeForce 315M	210	1070	NA	NA

Videocard Name	Passmark G3D Mark (higher is better)	Rank (lower is better)	Videocard Value (higher is better)	Price (USD)
GeForce 320M	273	1015	NA	NA
GeForce 405	214	1062	8.73	\$24.64*
GeForce 410M	349	965	NA	NA
GeForce 505	191	1094	NA	NA
GeForce 510	304	993	4.35	\$69.99*
GeForce 605	318	985	3.25	\$97.99*
GeForce 6100	21	1466	NA	NA
GeForce 6100 nForce 400	25	1449	NA	NA
GeForce 6100 nForce 405	22	1463	NA	NA
GeForce 6100 nForce 420	25	1448	NA	NA
GeForce 6100 nForce 430	23	1458	NA	NA
GeForce 610M	403	935	NA	NA
GeForce 615	546	834	NA	NA
GeForce 6150	21	1464	0.15	\$149.99
GeForce 6150 LE	21	1467	NA	NA
GeForce 6150SE	24	1453	NA	NA
GeForce 6150SE nForce 430	22	1460	NA	NA
GeForce 6200	44	1378	1.11	\$39.99*
GeForce 6200 A-LE	32	1425	NA	NA
GeForce 6200 LE	26	1442	0.65	\$41.24*
GeForce 6200 TurboCache	38	1399	NA	NA
GeForce 6200SE TurboCache	29	1435	NA	NA
GeForce 6500	37	1403	NA	NA
GeForce 6600	62	1323	NA	NA
GeForce 6600 GT	102	1215	1.58	\$64.95*
GeForce 6600 LE	49	1359	NA	NA
GeForce 6610 XL	88	1257	NA	NA
Videocard Name	Passmark G3D Mark (higher is better)	Rank (lower is better)	Videocard Value (higher is better)	Price (USD)
GeForce 6700 XL	101	1220	NA	NA
GeForce 6800	112	1195	2.81	\$39.99*
GeForce 6800 GS	136	1150	NA	NA
GeForce 6800 GS/XT	100	1222	NA	NA
GeForce 6800 GT	142	1139	NA	NA
GeForce 6800 LE	109	1198	NA	NA
GeForce 6800 Ultra	138	1144	NA	NA
GeForce 6800 XT	101	1219	NA	NA
GeForce 7000M	13	1487	NA	NA
GeForce 7000M / nForce 610M	12	1488	NA	NA
GeForce 7025 / nForce 630a	25	1447	NA	NA
GeForce 7050 / nForce 610i	27	1437	NA	NA
GeForce 7050 / nForce 620i	31	1427	NA	NA
GeForce 7050 / nForce 630i	26	1443	NA	NA
GeForce 7050 PV / nForce 630a	22	1462	NA	NA
GeForce 705M	454	902	NA	NA
GeForce 7100 / nForce 630i	31	1428	NA	NA
GeForce 7100 GS	43	1380	NA	NA
GeForce 710A	484	878	NA	NA
GeForce 710M	564	808	NA	NA
GeForce 7150 / nForce 630i	33	1422	NA	NA

Videocard Name	Passmark G3D Mark (higher is better)	Rank (lower is better)	Videocard Value (higher is better)	Price (USD)
GeForce 7150M / nForce 630M	17	1477	NA	NA
GeForce 7300 GS	66	1315	NA	NA
GeForce 7300 GT	108	1201	0.72	\$149.99*
GeForce 7300 LE	54	1346	1.72	\$32.00*
GeForce 7300 SE	39	1397	NA	NA
GeForce 7300 SE/7200 GS	41	1386	NA	NA
GeForce 730A	789	592	NA	NA
GeForce 7350 LE	74	1291	NA	NA
GeForce 7500 LE	69	1304	NA	NA
GeForce 7600 GS	134	1154	1.58	\$84.99*
GeForce 7600 GT	182	1105	2.14	\$84.95*
GeForce 7650 GS	134	1155	NA	NA
GeForce 7800 GS	177	1110	NA	NA
GeForce 7800 GT	195	1088	2.44	\$80.00*
GeForce 7800 GTX	223	1053	NA	NA
GeForce 7900 GS	218	1057	NA	NA
GeForce 7900 GT	258	1030	NA	NA
GeForce 7900 GT/GTO	246	1038	NA	NA
GeForce 7900 GTX	305	992	NA	NA
GeForce 7950 GT	263	1024	2.30	\$114.95*
GeForce 7950 GX2	191	1095	3.48	\$54.99*
GeForce 800A	440	910	NA	NA
GeForce 800M	550	824	NA	NA
GeForce 8100 / nForce 720a	85	1262	NA	NA
GeForce 810A	638	733	NA	NA
GeForce 810M	483	880	NA	NA
GeForce 8200	79	1282	NA	NA
GeForce 8200M G	56	1344	NA	NA
Videocard Name	Passmark G3D Mark (higher is better)	Rank (lower is better)	Videocard Value (higher is better)	Price (USD)
GeForce 820A	691	684	NA	NA
GeForce 820M	613	759	NA	NA
GeForce 825M	754	624	NA	NA
GeForce 8300	91	1251	4.04	\$22.68*
GeForce 8300 GS	66	1312	NA	NA
GeForce 830A	990	479	NA	NA
GeForce 830M	873	542	NA	NA
GeForce 8400	100	1221	1.45	\$69.78*
GeForce 8400 GS	113	1191	2.83	\$39.99
GeForce 8400 SE	68	1307	NA	NA
GeForce 8400M G	58	1338	NA	NA
GeForce 8400M GS	82	1273	5.49	\$14.99*
GeForce 8400M GT	97	1229	NA	NA
GeForce 840A	876	540	NA	NA
GeForce 840M	905	524	NA	NA
GeForce 845M	1106	419	NA	NA
GeForce 8500 GT	137	1148	NA	NA
GeForce 8600 GS	143	1138	NA	NA
GeForce 8600 GT	243	1040	NA	NA
GeForce 8600 GTS	287	1005	NA	NA

Videocard Name	Passmark G3D Mark (higher is better)	Rank (lower is better)	Videocard Value (higher is better)	Price (USD)
GeForce 8600M GS	124	1166	NA	NA
GeForce 8600M GT	169	1119	NA	NA
GeForce 8700M GT	208	1074	NA	NA
GeForce 8800 GS	550	825	NA	NA
GeForce 8800 GT	750	628	NA	NA
GeForce 8800 GTS	605	770	NA	NA
GeForce 8800 GTS 512	836	562	NA	NA
GeForce 8800 GTX	763	613	NA	NA
GeForce 8800 Ultra	783	596	NA	NA
GeForce 8800M GTS	474	890	NA	NA
GeForce 8800M GTX	543	842	NA	NA
GeForce 9100	82	1270	NA	NA
GeForce 9100M G	74	1289	NA	NA
GeForce 910M	475	886	NA	NA
GeForce 9200	81	1281	NA	NA
GeForce 9200M GE	82	1272	NA	NA
GeForce 9200M GS	85	1261	NA	NA
GeForce 920A	925	514	NA	NA
GeForce 920M	729	644	NA	NA
GeForce 920MX	1047	447	NA	NA
GeForce 9300	126	1163	NA	NA
GeForce 9300 / nForce 730i	130	1157	NA	NA
GeForce 9300 GE	101	1217	4.42	\$22.99*
GeForce 9300 GS	91	1247	1.53	\$59.95*
GeForce 9300GE	97	1228	NA	NA
GeForce 9300M G	84	1264	NA	NA
GeForce 9300M GS	95	1236	NA	NA
GeForce 930A	1203	389	NA	NA
GeForce 930M	935	509	NA	NA
Videocard Name	Passmark G3D Mark (higher is better)	Rank (lower is better)	Videocard Value (higher is better)	Price (USD)
GeForce 930MX	1178	398	NA	NA
GeForce 9400	144	1137	NA	NA
GeForce 9400 GT	188	1099	2.35	\$79.99*
GeForce 9400M	120	1171	NA	NA
GeForce 9400M G	125	1165	NA	NA
GeForce 940A	810	578	NA	NA
GeForce 940M	975	490	NA	NA
GeForce 940MX	1313	361	NA	NA
GeForce 945M	1434	331	NA	NA
GeForce 9500 GS	280	1008	NA	NA
GeForce 9500 GT	275	1012	3.20	\$85.99*
GeForce 9500M	103	1211	NA	NA
GeForce 9500M G	166	1121	NA	NA
GeForce 9500M GS	182	1104	NA	NA
GeForce 9600 GS	448	906	NA	NA
GeForce 9600 GSO	517	857	10.35	\$49.99*
GeForce 9600 GSO 512	502	869	NA	NA
GeForce 9600 GT	732	643	18.31	\$39.99*
GeForce 9600M GS	233	1048	NA	NA

Videocard Name	Passmark G3D Mark (higher is better)	Rank (lower is better)	Videocard Value (higher is better)	Price (USD)
GeForce 9600M GT	261	1026	NA	NA
GeForce 9600M GT / GeForce GT 220M	293	1000	NA	NA
GeForce 9650M GS	270	1017	NA	NA
GeForce 9650M GT	255	1034	NA	NA
GeForce 9700M GT	320	981	NA	NA
GeForce 9700M GTS	479	882	NA	NA
GeForce 9800 GT	710	666	6.83	\$103.99*
GeForce 9800 GTX	769	607	NA	NA
GeForce 9800 GTX+	903	525	NA	NA
GeForce 9800 GTX/9800 GTX+	883	532	9.82	\$89.99*
GeForce 9800 GX2	800	583	NA	NA
GeForce 9800 S	635	738	NA	NA
GeForce 9800M GS	547	832	NA	NA
GeForce 9800M GT	469	894	NA	NA
GeForce 9800M GTS	645	727	NA	NA
GeForce 9800M GTX	527	852	1.60	\$328.50*
GeForce FX 5200	7	1506	0.11	\$69.99*
GeForce FX 5200 Ultra	12	1491	NA	NA
GeForce FX 5200LE	7	1512	0.16	\$42.99*
GeForce FX 5200SE	11	1493	NA	NA
GeForce FX 5500	8	1503	0.22	\$36.99*
GeForce FX 5600	11	1494	NA	NA
GeForce FX 5600 Ultra	17	1479	NA	NA
GeForce FX 5600XT	9	1501	NA	NA
GeForce FX 5700	41	1387	NA	NA
GeForce FX 5700 Ultra	34	1416	NA	NA
GeForce FX 5700LE	25	1450	NA	NA
GeForce FX 5700VE	33	1421	NA	NA
GeForce FX 5900	34	1413	NA	NA
GeForce FX 5900 Ultra	41	1388	NA	NA
Videocard Name	Passmark G3D Mark (higher is better)	Rank (lower is better)	Videocard Value (higher is better)	Price (USD)
GeForce FX 5900XT	40	1390	NA	NA
GeForce FX 5950 Ultra	59	1335	NA	NA
GeForce FX Go 5200	8	1502	NA	NA
GeForce FX Go 5600	17	1478	NA	NA
GeForce FX Go5300	12	1489	NA	NA
GeForce FX Go5650	16	1480	NA	NA
GeForce FX Go5700	51	1352	NA	NA
GeForce G 103M	106	1204	NA	NA
GeForce G 105M	113	1190	NA	NA
GeForce G100	100	1223	5.03	\$19.99*
GeForce G102M	95	1234	NA	NA
GeForce G105M	181	1106	NA	NA
GeForce G200	134	1156	NA	NA
GeForce G205M	91	1250	NA	NA
GeForce G210	171	1116	2.71	\$63.13*
GeForce G210M	201	1082	NA	NA
GeForce Go 6100	18	1475	NA	NA
GeForce Go 6150	18	1476	NA	NA

Videocard Name	Passmark G3D Mark (higher is better)	Rank (lower is better)	Videocard Value (higher is better)	Price (USD)
GeForce Go 6200	15	1482	NA	NA
GeForce Go 6400	24	1454	NA	NA
GeForce Go 6600	69	1305	NA	NA
GeForce Go 6600 TE/6200 TE	44	1375	NA	NA
GeForce Go 6800	106	1203	NA	NA
GeForce Go 6800 Ultra	137	1147	NA	NA
GeForce Go 7200	45	1373	NA	NA
GeForce Go 7300	50	1355	NA	NA
GeForce Go 7400	62	1325	NA	NA
GeForce Go 7600	128	1159	NA	NA
GeForce Go 7600 GT	163	1124	NA	NA
GeForce Go 7700	147	1134	NA	NA
GeForce Go 7800	116	1181	NA	NA
GeForce Go 7800 GTX	208	1072	NA	NA
GeForce Go 7900 GS	176	1111	NA	NA
GeForce Go 7950 GTX	264	1023	NA	NA
GeForce GPU	1171	400	NA	NA
GeForce GT 1030	2241	231	28.74	\$77.99
GeForce GT 120	289	1003	8.40	\$34.49*
GeForce GT 120M	274	1013	NA	NA
GeForce GT 130	462	900	16.54	\$27.99*
GeForce GT 130M	299	997	NA	NA
GeForce GT 140	757	618	NA	NA
GeForce GT 220	351	961	4.39	\$79.99*
GeForce GT 220M	261	1028	NA	NA
GeForce GT 230	474	888	10.79	\$43.99*
GeForce GT 230M	333	974	NA	NA
GeForce GT 240	650	722	17.14	\$37.99*
GeForce GT 240M	353	958	NA	NA
GeForce GT 320	554	822	16.95	\$32.69*
GeForce GT 320M	205	1078	NA	NA
Videocard Name	Passmark G3D Mark (higher is better)	Rank (lower is better)	Videocard Value (higher is better)	Price (USD)
GeForce GT 325M	294	999	NA	NA
GeForce GT 330	554	820	13.88	\$39.99*
GeForce GT 330M	363	953	NA	NA
GeForce GT 335M	503	867	NA	NA
GeForce GT 340	775	603	14.64	\$52.99*
GeForce GT 415M	319	984	NA	NA
GeForce GT 420	472	892	10.27	\$45.99*
GeForce GT 420M	545	837	NA	NA
GeForce GT 425M	625	749	NA	NA
GeForce GT 430	660	714	18.34	\$35.99*
GeForce GT 435M	666	701	NA	NA
GeForce GT 440	841	557	12.03	\$69.99*
GeForce GT 445M	1055	442	NA	NA
GeForce GT 520	367	948	6.12	\$59.99*
GeForce GT 520M	380	942	6.34	\$59.99*
GeForce GT 520MX	405	933	NA	NA
GeForce GT 525M	600	774	NA	NA

Videocard Name	Passmark G3D Mark (higher is better)	Rank (lower is better)	Videocard Value (higher is better)	Price (USD)
GeForce GT 530	743	634	15.16	\$49.00*
GeForce GT 540M	649	724	NA	NA
GeForce GT 545	1295	366	23.30	\$55.59*
GeForce GT 550M	722	650	NA	NA
GeForce GT 555M	894	529	NA	NA
GeForce GT 610	352	960	8.81	\$39.99*
GeForce GT 620	431	917	10.80	\$39.99*
GeForce GT 620M	567	803	NA	NA
GeForce GT 625	439	911	NA	NA
GeForce GT 625M	479	883	NA	NA
GeForce GT 630	746	629	7.52	\$99.21*
GeForce GT 630M	686	687	NA	NA
GeForce GT 635	917	520	NA	NA
GeForce GT 635M	692	682	NA	NA
GeForce GT 640	1280	371	21.35	\$59.99*
GeForce GT 640M	953	502	NA	NA
GeForce GT 640M LE	785	594	0.92	\$849.99*
GeForce GT 645	2215	232	NA	NA
GeForce GT 645M	878	538	NA	NA
GeForce GT 650M	1222	385	NA	NA
GeForce GT 705	415	926	NA	NA
GeForce GT 710	678	695	18.35	\$36.99
GeForce GT 710M	549	828	NA	NA
GeForce GT 720	718	657	13.06	\$54.99*
GeForce GT 720A	661	711	NA	NA
GeForce GT 720M	558	814	NA	NA
GeForce GT 730	924	515	15.40	\$59.99
GeForce GT 730A	732	642	NA	NA
GeForce GT 730M	822	572	NA	NA
GeForce GT 735M	666	703	NA	NA
GeForce GT 740	1574	313	16.57	\$94.99*
GeForce GT 740M	781	599	NA	NA
Videocard Name	Passmark G3D Mark (higher is better)	Rank (lower is better)	Videocard Value (higher is better)	Price (USD)
GeForce GT 745A	1155	404	NA	NA
GeForce GT 745M	967	493	NA	NA
GeForce GT 750M	1289	367	NA	NA
GeForce GT 755M	1581	310	NA	NA
GeForce GT 820M	702	673	NA	NA
GeForce GT625M	517	856	NA	NA
GeForce GTS 160M	678	696	NA	NA
GeForce GTS 240	823	571	12.67	\$64.99*
GeForce GTS 250	879	536	7.65	\$114.99*
GeForce GTS 250M	566	804	NA	NA
GeForce GTS 350M	556	817	NA	NA
GeForce GTS 360M	758	617	NA	NA
GeForce GTS 450	1557	315	23.96	\$64.99*
GeForce GTX 1050	4579	108	35.23	\$129.99
GeForce GTX 1050 Ti	5923	72	34.85	\$169.99
GeForce GTX 1050 Ti with Max-Q Design	5932	71	NA	NA

Videocard Name	Passmark G3D Mark (higher is better)	Rank (lower is better)	Videocard Value (higher is better)	Price (USD)
GeForce GTX 1060	8973	33	31.05	\$289.00
GeForce GTX 1060 3GB	8913	34	38.76	\$229.99
GeForce GTX 1060 5GB	8642	37	NA	NA
GeForce GTX 1060 with Max-Q Design	7490	56	NA	NA
GeForce GTX 1070	11172	18	27.93	\$399.99
GeForce GTX 1070 Ti	12186	12	27.08	\$449.99
GeForce GTX 1070 with Max-Q Design	8663	36	NA	NA
GeForce GTX 1080	12301	10	25.11	\$489.99
GeForce GTX 1080 Ti	14057	5	19.52	\$719.99
GeForce GTX 1080 with Max-Q Design	10423	23	NA	NA
GeForce GTX 260	1132	410	11.88	\$95.38*
GeForce GTX 260M	593	784	NA	NA
GeForce GTX 275	1240	379	10.34	\$119.99*
GeForce GTX 280	1199	390	2.29	\$522.78*
GeForce GTX 280M	619	753	NA	NA
GeForce GTX 285	1270	375	7.06	\$179.99*
GeForce GTX 285M	740	637	NA	NA
GeForce GTX 295	1053	444	6.58	\$159.99*
GeForce GTX 460	2656	204	29.53	\$89.99*
GeForce GTX 460 SE	2248	229	14.06	\$159.99*
GeForce GTX 460 v2	2492	213	12.46	\$199.99*
GeForce GTX 460M	1395	340	NA	NA
GeForce GTX 465	2949	186	11.20	\$263.28*
GeForce GTX 470	3603	148	6.90	\$522.01*
GeForce GTX 470M	1949	265	NA	NA
GeForce GTX 480	4359	118	60.56	\$71.99*
GeForce GTX 480M	2042	253	NA	NA
GeForce GTX 485M	2382	217	NA	NA
GeForce GTX 550 Ti	1926	269	6.70	\$287.59*
GeForce GTX 555	2160	240	NA	NA
GeForce GTX 560	3120	174	8.83	\$353.59*
GeForce GTX 560 SE	2204	235	24.50	\$89.99*
GeForce GTX 560 Ti	3535	155	25.62	\$138.00*
Videocard Name	Passmark G3D Mark (higher is better)	Rank (lower is better)	Videocard Value (higher is better)	Price (USD)
GeForce GTX 560M	1552	316	NA	NA
GeForce GTX 570	4417	115	44.18	\$99.99*
GeForce GTX 570M	2021	256	NA	NA
GeForce GTX 580	5022	93	17.32	\$289.88*
GeForce GTX 580M	2326	220	NA	NA
GeForce GTX 590	4211	127	22.89	\$184.00*
GeForce GTX 645	1924	271	NA	NA
GeForce GTX 650	1832	279	12.66	\$144.81*
GeForce GTX 650 Ti	2659	203	20.46	\$129.99*
GeForce GTX 650 Ti BOOST	3536	154	NA	NA
GeForce GTX 660	4126	130	11.79	\$349.99*
GeForce GTX 660 Ti	4670	105	14.51	\$321.99*
GeForce GTX 660M	1431	333	NA	NA
GeForce GTX 670	5372	87	11.31	\$474.99*
GeForce GTX 670M	1932	268	NA	NA

Videocard Name	Passmark G3D Mark (higher is better)	Rank (lower is better)	Videocard Value (higher is better)	Price (USD)
GeForce GTX 670MX	2068	249	NA	NA
GeForce GTX 675M	2141	243	NA	NA
GeForce GTX 675MX	2414	215	NA	NA
GeForce GTX 680	5678	78	9.79	\$579.99*
GeForce GTX 680M	3356	163	6.71	\$499.99*
GeForce GTX 680MX	4353	119	NA	NA
GeForce GTX 690	5370	88	5.38	\$999.00*
GeForce GTX 745	2178	238	NA	NA
GeForce GTX 750	3297	167	21.84	\$150.99*
GeForce GTX 750 Ti	3728	146	12.47	\$299.01*
GeForce GTX 760	4939	96	19.76	\$249.99*
GeForce GTX 760 Ti	5110	92	17.18	\$297.50*
GeForce GTX 760A	1281	369	NA	NA
GeForce GTX 760M	1415	337	NA	NA
GeForce GTX 765M	1879	274	NA	NA
GeForce GTX 770	6081	69	13.52	\$449.99*
GeForce GTX 770M	2640	205	14.84	\$177.99*
GeForce GTX 775M	4178	128	NA	NA
GeForce GTX 780	7970	50	10.76	\$740.99*
GeForce GTX 780 Ti	8895	35	11.86	\$749.99*
GeForce GTX 780M	4003	135	NA	NA
GeForce GTX 850A	802	581	NA	NA
GeForce GTX 850M	1572	314	NA	NA
GeForce GTX 860M	1851	276	NA	NA
GeForce GTX 870M	2383	216	NA	NA
GeForce GTX 880M	3653	147	NA	NA
GeForce GTX 950	5212	90	26.81	\$194.44*
GeForce GTX 950A	1532	319	NA	NA
GeForce GTX 950M	1817	281	NA	NA
GeForce GTX 960	5804	76	25.24	\$229.99*
GeForce GTX 960A	2358	218	NA	NA
GeForce GTX 960M	2204	234	NA	NA
GeForce GTX 965M	3147	171	NA	NA
GeForce GTX 970	8591	39	18.47	\$465.18
Videocard Name	Passmark G3D Mark (higher is better)	Rank (lower is better)	Videocard Value (higher is better)	Price (USD)
GeForce GTX 970M	4044	132	2.13	\$1,899.00*
GeForce GTX 980	9596	27	16.05	\$598.11
GeForce GTX 980 Ti	11340	17	16.68	\$679.99
GeForce GTX 980M	5860	74	NA	NA
GeForce GTX Titan	7913	51	3.85	\$2,054.59*
GeForce GTX TITAN Black	8610	38	8.61	\$999.99*
GeForce GTX TITAN X	10691	21	5.35	\$1,999.99*
GeForce GTX TITAN Z	7754	53	2.77	\$2,799.99*
GeForce MX110	1332	354	NA	NA
GeForce MX130	1893	273	NA	NA
GeForce MX150	2095	247	NA	NA
GeForce PCX 5300	6	1521	NA	NA
GeForce PCX 5750	34	1412	NA	NA
GeForce2 GTS/GeForce2 Pro	3	1572	NA	NA

Videocard Name	Passmark G3D Mark (higher is better)	Rank (lower is better)	Videocard Value (higher is better)	Price (USD)
GeForce2 Integrated GPU	4	1560	NA	NA
GeForce2 MX	2	1610	NA	NA
GeForce2 MX 100/200	3	1595	NA	NA
GeForce2 MX/MX 400	3	1575	NA	NA
GeForce2 Ti	4	1553	NA	NA
GeForce3	4	1548	NA	NA
GeForce3 Ti 200	4	1562	NA	NA
GeForce3 Ti 500	2	1617	NA	NA
GeForce4 420 Go	3	1592	NA	NA
GeForce4 420 Go 32M	5	1541	NA	NA
GeForce4 4200 Go	3	1573	NA	NA
GeForce4 440 Go	3	1582	NA	NA
GeForce4 440 Go 64M	5	1525	NA	NA
GeForce4 448 Go	5	1535	NA	NA
GeForce4 460 Go --MobileForce M4 Stock--	5	1528	NA	NA
GeForce4 MX 4000	4	1557	NA	NA
GeForce4 MX 420	4	1549	NA	NA
GeForce4 MX 440	4	1558	NA	NA
GeForce4 MX 440 with AGP8X	4	1550	NA	NA
GeForce4 MX 440SE	4	1556	NA	NA
GeForce4 MX 460	4	1564	NA	NA
GeForce4 MX Integrated GPU	6	1517	NA	NA
GeForce4 Ti 4200	5	1537	NA	NA
GeForce4 Ti 4400	7	1511	NA	NA
GeForce4 Ti 4600	5	1536	0.10	\$53.99*
GeForce4 Ti 4800 SE	7	1509	NA	NA
GeForce9400M	105	1205	NA	NA
GF117	554	821	NA	NA
GIGABYTE RADEON 9600 PRO	39	1396	NA	NA
GRID K1	880	535	0.64	\$1,370.00
GRID K140Q	727	645	NA	NA
GRID K160Q	701	675	NA	NA
GRID K180Q	778	601	NA	NA
GRID K2	3772	143	2.59	\$1,455.00
GRID K220Q	912	522	NA	NA
Videocard Name	Passmark G3D Mark (higher is better)	Rank (lower is better)	Videocard Value (higher is better)	Price (USD)
GRID K240Q	2143	242	NA	NA
GRID K260Q	2940	187	NA	NA
GRID K280Q	2243	230	NA	NA
GRID K520	4384	116	NA	NA
GRID M60-1Q	4872	99	NA	NA
GRID M60-2Q	5904	73	NA	NA
GRID M60-8Q	3909	138	NA	NA
GRID P6-4Q	4429	113	NA	NA
HD6450	227	1051	NA	NA
Intel - Express Chipset G41	59	1336	NA	NA
Intel - Express Chipset Q45/Q43	60	1329	NA	NA
Intel 4th Generation Haswell HD	419	925	NA	NA
Intel 82845G Controller	2	1620	NA	NA

Videocard Name	Passmark G3D Mark (higher is better)	Rank (lower is better)	Videocard Value (higher is better)	Price (USD)
Intel 82845G/GL Controller	2	1612	NA	NA
Intel 82845G/GL/GE/PE/GV Controller	2	1604	NA	NA
Intel 82865G Controller	4	1551	NA	NA
Intel 82915G Express	5	1531	NA	NA
Intel 82915G/GV/910GL Express	3	1600	NA	NA
Intel 82945G Express	6	1523	NA	NA
Intel 865 Embedded Controller	3	1584	NA	NA
Intel 946GZ Embedded Chipset Function 0	3	1596	NA	NA
Intel 946GZ Express	6	1518	NA	NA
Intel B43 Express Chipset	64	1319	NA	NA
Intel Coffee Lake UHD	1124	413	NA	NA
Intel G33/G31 Express	12	1490	NA	NA
Intel G35 Express	30	1432	NA	NA
Intel G41 Express Chipset	63	1322	NA	NA
Intel G41 Express Chipset v2	71	1294	NA	NA
Intel G41 Express-Chipsatz	58	1339	NA	NA
Intel G45/G43 Express Chipset	69	1301	NA	NA
Intel G965 Express	18	1474	NA	NA
Intel Haswell HD - GT1	118	1176	NA	NA
Intel Haswell HD - GT2	160	1125	NA	NA
Intel HD 3000	313	986	0.33	\$945.00*
Intel HD 4000	455	901	0.29	\$1,592.95*
Intel HD 4400	565	805	NA	NA
Intel HD 4600	711	665	NA	NA
Intel HD 5000	599	777	NA	NA
Intel HD 510	616	757	NA	NA
Intel HD 515	642	731	NA	NA
Intel HD 520	828	566	NA	NA
Intel HD 5200	777	602	NA	NA
Intel HD 530	997	474	NA	NA
Intel HD 5300	402	936	NA	NA
Intel HD 5500	584	794	NA	NA
Intel HD 5600	663	708	NA	NA
Intel HD 6000	827	567	NA	NA
Intel HD 610	707	667	NA	NA
Intel HD 615	702	674	NA	NA
Videocard Name	Passmark G3D Mark (higher is better)	Rank (lower is better)	Videocard Value (higher is better)	Price (USD)
Intel HD 630	1122	414	NA	NA
Intel HD Family	432	916	NA	NA
Intel HD Graphics 620	923	516	NA	NA
Intel HD manual-gen9_2015-133271	165	1123	NA	NA
Intel HD Modded	112	1194	NA	NA
Intel HD P3000	352	959	NA	NA
Intel HD P4000	427	919	NA	NA
Intel HD P4600	604	771	NA	NA
Intel HD P4600/P4700	666	702	NA	NA
Intel HD P530	1074	433	NA	NA
Intel HD P630	1340	352	NA	NA
Intel Infoshock HD	193	1091	NA	NA

Videocard Name	Passmark G3D Mark (higher is better)	Rank (lower is better)	Videocard Value (higher is better)	Price (USD)
Intel Iris 5100	742	635	NA	NA
Intel Iris 540	1346	348	NA	NA
Intel Iris 550	1623	306	NA	NA
Intel Iris 6100	970	492	NA	NA
Intel Iris Plus 640	1385	341	NA	NA
Intel Iris Plus 650	1540	317	NA	NA
Intel Iris Pro 5200	1169	401	NA	NA
Intel Iris Pro 580	1842	277	NA	NA
Intel Iris Pro Graphics 6200	1530	320	NA	NA
Intel Iris Pro P580	2080	248	NA	NA
Intel Media Accelerator	32	1423	NA	NA
Intel Media Accelerator 3150	3	1599	NA	NA
Intel Media Accelerator 500	3	1590	NA	NA
Intel Media Accelerator 600	6	1513	NA	NA
Intel Media Accelerator HD	115	1184	NA	NA
Intel Q33 Express	11	1495	NA	NA
Intel Q35 Express	10	1499	NA	NA
Intel Q45/Q43 Express Chipset	67	1310	NA	NA
Intel Q45/Q43 Express-Chipsatz	60	1330	NA	NA
Intel Q965/Q963 Express	6	1519	NA	NA
Intel Skylake HD DT GT2	576	799	NA	NA
Intel UHD 600	348	966	NA	NA
Intel UHD 605	529	850	NA	NA
Intel UHD 610	698	678	NA	NA
Intel UHD 630	1152	406	NA	NA
Intel UHD Graphics 620	992	478	NA	NA
Intel US15 Embedded Media and Controller	7	1508	NA	NA
ION	98	1227	0.43	\$229.99*
ION LE	104	1206	NA	NA
KB 2C	235	1046	NA	NA
M860G with Mobility Radeon 4100	75	1287	NA	NA
M880G with Mobility Radeon HD 4200	92	1244	NA	NA
M880G with Mobility Radeon HD 4225	71	1296	NA	NA
M880G with Mobility Radeon HD 4250	104	1207	NA	NA
Matrox C420 LP PCIe x16	635	739	NA	NA
Matrox C680 PCIe x16	1951	264	NA	NA
Matrox C900 PCIe x16	1812	282	NA	NA
Videocard Name	Passmark G3D Mark (higher is better)	Rank (lower is better)	Videocard Value (higher is better)	Price (USD)
Matrox G200e WDDM 1.2	59	1334	NA	NA
Matrox G200eh	40	1389	NA	NA
Matrox G200eh WDDM 1.2	52	1349	NA	NA
Matrox G200eR	36	1405	NA	NA
Matrox G200eR WDDM 1.2	67	1308	NA	NA
Matrox G200eW	42	1384	NA	NA
Matrox G200eW WDDM 1.2	50	1356	NA	NA
Matrox M9140 LP PCIe x16	21	1465	NA	NA
Matrox Millennium P650 PCIe 128	5	1539	NA	NA
Matrox Millennium P690 PCIe x16	10	1500	NA	NA
Matrox Millennium P690 Plus LP PCIe x16	6	1515	NA	NA

Videocard Name	Passmark G3D Mark (higher is better)	Rank (lower is better)	Videocard Value (higher is better)	Price (USD)
Matrox Parhelia APVe	5	1534	NA	NA
MEDION RADEON X740XL	94	1237	NA	NA
Mobile Intel - famiglia Express Chipset 45	37	1402	NA	NA
Mobile Intel - famiglia Express Chipset serie 4	47	1365	NA	NA
Mobile Intel 4 Express-Chipsatzfamilie	44	1377	NA	NA
Mobile Intel 45 Express	43	1381	NA	NA
Mobile Intel 45 Express-Chipsatzfamilie	46	1370	NA	NA
Mobile Intel 915GM/GMS/910GML Express	4	1559	NA	NA
Mobile Intel 945 Express	4	1554	NA	NA
Mobile Intel 945GM Express	5	1529	NA	NA
Mobile Intel 945GM/GU Express	5	1533	NA	NA
Mobile Intel 965 Express	20	1469	NA	NA
Mobile Intel 965 Express-Chipsatzfamilie	24	1455	NA	NA
Mobile Intel HD	409	929	NA	NA
Mobile Intel serie 4 Express	44	1376	NA	NA
MOBILITY FIREGL T2	39	1391	NA	NA
MOBILITY FIREGL T2/T2e	33	1419	NA	NA
MOBILITY FireGL V3200	61	1327	NA	NA
MOBILITY FireGL V5000	81	1277	NA	NA
MOBILITY FireGL V5200	45	1374	NA	NA
MOBILITY FireGL V5250	27	1439	NA	NA
Mobility FireGL V5725	219	1056	NA	NA
Mobility Radeon 4100	81	1279	NA	NA
MOBILITY RADEON 7000 IGP	6	1520	NA	NA
MOBILITY RADEON 7500	3	1586	NA	NA
MOBILITY RADEON 9000	3	1594	NA	NA
MOBILITY RADEON 9000 IGP	7	1504	NA	NA
MOBILITY RADEON 9000/9100 IGP	5	1532	NA	NA
MOBILITY RADEON 9100 IGP	2	1603	NA	NA
MOBILITY RADEON 9200	3	1602	NA	NA
MOBILITY RADEON 9600 PRO TURBO	24	1452	NA	NA
MOBILITY RADEON 9600/9700	39	1393	NA	NA
MOBILITY RADEON 9700	27	1438	NA	NA
MOBILITY RADEON 9800	46	1371	NA	NA
Mobility Radeon HD 2300	50	1354	NA	NA
Mobility Radeon HD 2400	90	1256	NA	NA
Mobility Radeon HD 2400 XT	104	1208	NA	NA
Mobility Radeon HD 2600	170	1117	NA	NA
Videocard Name	Passmark G3D Mark (higher is better)	Rank (lower is better)	Videocard Value (higher is better)	Price (USD)
Mobility Radeon HD 2600 XT	190	1097	NA	NA
Mobility Radeon HD 3410	62	1324	NA	NA
Mobility Radeon HD 3430	97	1231	NA	NA
Mobility Radeon HD 3450	91	1252	NA	NA
Mobility Radeon HD 3470	93	1238	NA	NA
Mobility Radeon HD 3470 Hybrid X2	93	1239	NA	NA
Mobility Radeon HD 3650	213	1066	NA	NA
Mobility Radeon HD 3670	232	1049	NA	NA
Mobility Radeon HD 3850	365	950	NA	NA
Mobility Radeon HD 3870	547	831	NA	NA

Videocard Name	Passmark G3D Mark (higher is better)	Rank (lower is better)	Videocard Value (higher is better)	Price (USD)
Mobility Radeon HD 3870 X2	564	807	NA	NA
Mobility Radeon HD 4200	91	1254	NA	NA
Mobility Radeon HD 4225	66	1316	NA	NA
Mobility Radeon HD 4250	98	1226	NA	NA
Mobility Radeon HD 4270	92	1242	NA	NA
Mobility Radeon HD 4330	135	1151	NA	NA
Mobility Radeon HD 4350	148	1133	NA	NA
Mobility Radeon HD 4550	192	1093	NA	NA
Mobility Radeon HD 4570	198	1085	NA	NA
Mobility Radeon HD 4650	401	937	NA	NA
Mobility Radeon HD 4670	463	899	NA	NA
Mobility Radeon HD 4830	511	861	NA	NA
Mobility Radeon HD 4850	859	552	NA	NA
Mobility Radeon HD 4870	719	652	NA	NA
Mobility Radeon HD 5000	773	606	NA	NA
Mobility Radeon HD 5000 Serisi	478	885	NA	NA
Mobility Radeon HD 5165	284	1007	NA	NA
Mobility Radeon HD 530v	174	1112	NA	NA
Mobility Radeon HD 540v	188	1098	NA	NA
Mobility Radeon HD 5430	181	1107	NA	NA
Mobility Radeon HD 5450	214	1065	NA	NA
Mobility Radeon HD 545v	199	1083	NA	NA
Mobility Radeon HD 5470	235	1044	NA	NA
Mobility Radeon HD 550v	266	1020	NA	NA
Mobility Radeon HD 5570	711	662	NA	NA
Mobility Radeon HD 560v	322	980	NA	NA
Mobility Radeon HD 5650	547	833	NA	NA
Mobility Radeon HD 565v	325	978	NA	NA
Mobility Radeon HD 5730	674	698	NA	NA
Mobility Radeon HD 5850	765	610	NA	NA
Mobility Radeon HD 5870	1238	382	NA	NA
Mobility Radeon HD serie 4200	96	1233	NA	NA
Mobility Radeon X1300	39	1392	NA	NA
Mobility Radeon X1350	39	1394	NA	NA
Mobility Radeon X1400	43	1382	NA	NA
Mobility Radeon X1450	33	1420	NA	NA
Mobility Radeon X1600	92	1243	NA	NA
Mobility Radeon X1700	103	1212	NA	NA
MOBILITY RADEON X1800	129	1158	NA	NA
Videocard Name	Passmark G3D Mark (higher is better)	Rank (lower is better)	Videocard Value (higher is better)	Price (USD)
Mobility Radeon X1900	134	1152	NA	NA
Mobility Radeon X2300	48	1364	NA	NA
Mobility Radeon X2300 HD	48	1363	NA	NA
Mobility Radeon X2500	81	1276	NA	NA
MOBILITY RADEON X300	34	1417	NA	NA
MOBILITY RADEON X600	49	1358	NA	NA
MOBILITY RADEON X600 SE	49	1361	NA	NA
MOBILITY RADEON X700	66	1314	NA	NA
MOBILITY RADEON XPRESS 200	26	1441	NA	NA

Videocard Name	Passmark G3D Mark (higher is better)	Rank (lower is better)	Videocard Value (higher is better)	Price (USD)
Mobility Radeon. HD 5470	215	1061	NA	NA
MOBILITY/RADEON 9000	4	1568	NA	NA
MxGPU	2487	214	NA	NA
nForce 750a SLI	83	1269	NA	NA
nForce 760i SLI	140	1142	NA	NA
nForce 780a SLI	92	1246	NA	NA
nForce 980a/780a SLI	81	1278	NA	NA
NVIDIA TITAN X	13277	7	11.06	\$1,200.00*
NVIDIA TITAN Xp	14187	4	11.82	\$1,200.00*
NVS 2100M	186	1101	NA	NA
NVS 300	185	1102	5.01	\$36.99*
NVS 310	291	1002	0.87	\$336.00
NVS 3100M	205	1080	NA	NA
NVS 315	350	964	6.87	\$50.99
NVS 4200M	363	952	NA	NA
NVS 510	765	611	3.07	\$248.97
NVS 5100M	357	955	NA	NA
NVS 5200M	655	717	NA	NA
NVS 5400M	768	608	NA	NA
NVS 810	1153	405	1.85	\$624.99
OpenXT Display Driver	30	1430	NA	NA
PHDGD Ivy 4	394	939	NA	NA
PHDGD Quantic C3	104	1209	NA	NA
PHDGD Quebec 4.0 for Intel Q45/Q43 Express Chipset	66	1313	NA	NA
PHDGD Sapphire GR for Mobile Intel 965	19	1471	NA	NA
PHDGD Solo 1.2.0 x86	11	1498	NA	NA
PHDGD Solo 2 x64	20	1470	NA	NA
Quadro 1000M	750	627	4.29	\$174.95*
Quadro 1100M	755	623	NA	NA
Quadro 2000	1315	358	10.53	\$125.00
Quadro 2000 D	1182	397	NA	NA
Quadro 2000D	1278	372	6.12	\$209.00*
Quadro 2000M	1039	451	22.34	\$46.56
Quadro 280 NVS PCIe	5	1530	NA	NA
Quadro 3000M	1458	328	45.60	\$31.98
Quadro 400	240	1042	5.59	\$42.99*
Quadro 4000	2028	255	12.42	\$163.33
Quadro 4000M	1798	285	16.06	\$111.99
Quadro 410	419	924	4.42	\$95.00*
Quadro 5000	2835	194	16.32	\$173.73
Videocard Name	Passmark G3D Mark (higher is better)	Rank (lower is better)	Videocard Value (higher is better)	Price (USD)
Quadro 5000M	2039	254	NA	NA
Quadro 500M	672	699	NA	NA
Quadro 5010M	1824	280	7.73	\$235.95*
Quadro 600	696	680	12.66	\$55.00
Quadro 6000	3510	157	4.39	\$799.00
Quadro CX	947	504	6.32	\$149.95*
Quadro FX 1000	34	1415	NA	NA

Videocard Name	Passmark G3D Mark (higher is better)	Rank (lower is better)	Videocard Value (higher is better)	Price (USD)
Quadro FX 1100	35	1408	0.35	\$101.25*
Quadro FX 1300	24	1451	NA	NA
Quadro FX 1400	102	1214	NA	NA
Quadro FX 1500	156	1127	1.36	\$115.00*
Quadro FX 1500M	171	1115	NA	NA
Quadro FX 1600M	217	1058	1.45	\$149.90*
Quadro FX 1700	194	1090	2.16	\$89.99
Quadro FX 1700M	302	995	NA	NA
Quadro FX 1800	582	795	5.29	\$109.99
Quadro FX 1800M	482	881	NA	NA
Quadro FX 2500M	214	1064	2.15	\$99.99*
Quadro FX 2700M	530	848	5.31	\$99.95*
Quadro FX 2800M	662	710	13.27	\$49.95*
Quadro FX 3000	69	1306	0.53	\$129.98*
Quadro FX 3400/4400	104	1210	NA	NA
Quadro FX 3450	148	1132	1.07	\$138.75*
Quadro FX 3450/4000 SDI	134	1153	NA	NA
Quadro FX 350	85	1260	NA	NA
Quadro FX 3500	208	1073	1.61	\$129.98*
Quadro FX 3500M	306	991	3.06	\$99.99*
Quadro FX 350M	62	1326	NA	NA
Quadro FX 3600M	467	896	NA	NA
Quadro FX 360M	88	1258	NA	NA
Quadro FX 370	84	1266	0.91	\$92.75*
Quadro FX 370 LP	108	1202	NA	NA
Quadro FX 3700	633	743	7.04	\$89.99
Quadro FX 3700M	634	741	0.69	\$925.00*
Quadro FX 370M	93	1241	NA	NA
Quadro FX 380	150	1131	2.07	\$72.50*
Quadro FX 380 LP	195	1089	NA	NA
Quadro FX 3800	839	558	7.63	\$109.99
Quadro FX 3800M	802	580	NA	NA
Quadro FX 380M	207	1076	NA	NA
Quadro FX 4500	207	1077	0.83	\$249.00*
Quadro FX 4600	604	772	4.65	\$129.99*
Quadro FX 4700 X2	665	705	NA	NA
Quadro FX 4800	1000	470	6.67	\$149.99
Quadro FX 500/600 PCI	14	1483	NA	NA
Quadro FX 500/FX 600	7	1505	NA	NA
Quadro FX 540	81	1275	1.37	\$59.99*
Quadro FX 550	63	1321	NA	NA
Quadro FX 5500	242	1041	0.13	\$1,840.60*
Videocard Name	Passmark G3D Mark (higher is better)	Rank (lower is better)	Videocard Value (higher is better)	Price (USD)
Quadro FX 560	113	1186	0.76	\$150.25*
Quadro FX 5600	684	691	3.80	\$179.99
Quadro FX 570	116	1179	1.30	\$89.99
Quadro FX 570M	186	1100	NA	NA
Quadro FX 580	272	1016	3.03	\$90.00*
Quadro FX 5800	1105	421	5.69	\$194.39*

Videocard Name	Passmark G3D Mark (higher is better)	Rank (lower is better)	Videocard Value (higher is better)	Price (USD)
Quadro FX 770M	299	996	0.57	\$527.00*
Quadro FX 880M	355	957	NA	NA
Quadro FX Go1400	101	1216	NA	NA
Quadro GP100	12493	9	NA	NA
Quadro GV100	14589	2	NA	NA
Quadro K1000M	791	590	5.28	\$149.90*
Quadro K1100M	1010	465	12.79	\$79.00
Quadro K1200	3034	182	10.14	\$299.25
Quadro K2000	1715	296	9.64	\$177.99
Quadro K2000D	1672	301	3.56	\$469.99
Quadro K2000M	1082	430	15.47	\$69.95
Quadro K2100M	1315	359	8.22	\$159.99*
Quadro K2200	3562	151	10.18	\$349.98
Quadro K2200M	2572	210	NA	NA
Quadro K3000M	1762	290	11.37	\$155.00*
Quadro K3100M	1997	258	1.00	\$1,999.00*
Quadro K4000	2882	192	11.53	\$249.98
Quadro K4000M	2263	226	NA	NA
Quadro K4100M	2517	211	6.62	\$379.99*
Quadro K420	837	560	8.81	\$94.99
Quadro K4200	4472	110	9.32	\$479.99
Quadro K5000	4023	134	11.70	\$344.00
Quadro K5000M	2614	207	7.92	\$329.99*
Quadro K5100M	3102	175	NA	NA
Quadro K510M	624	750	NA	NA
Quadro K5200	6136	67	8.18	\$749.98
Quadro K600	825	568	8.26	\$100.00
Quadro K6000	7609	55	4.48	\$1,697.98
Quadro K610M	757	620	10.10	\$75.00*
Quadro K620	2326	221	13.85	\$167.99
Quadro K620M	863	550	NA	NA
Quadro M1000M	2249	228	11.20	\$200.89*
Quadro M1200	2891	191	NA	NA
Quadro M2000	4309	123	11.96	\$360.33
Quadro M2000M	2784	198	NA	NA
Quadro M2200	3414	162	NA	NA
Quadro M3000M	4340	120	NA	NA
Quadro M4000	6695	64	9.30	\$719.89
Quadro M4000M	4567	109	NA	NA
Quadro M5000	8446	41	4.75	\$1,780.00*
Quadro M5000M	5444	83	NA	NA
Quadro M500M	1016	463	NA	NA
Quadro M520	1517	322	NA	NA
Videocard Name	Passmark G3D Mark (higher is better)	Rank (lower is better)	Videocard Value (higher is better)	Price (USD)
Quadro M5500	9322	29	NA	NA
Quadro M6000	9295	30	2.33	\$3,998.00*
Quadro M6000 24GB	9937	26	NA	NA
Quadro M600M	1872	275	NA	NA
Quadro M620	2798	196	NA	NA

Videocard Name	Passmark G3D Mark (higher is better)	Rank (lower is better)	Videocard Value (higher is better)	Price (USD)
Quadro NVS 110M	47	1367	NA	NA
Quadro NVS 120M	47	1366	NA	NA
Quadro NVS 130M	59	1332	NA	NA
Quadro NVS 135M	57	1342	NA	NA
Quadro NVS 140M	90	1255	NA	NA
Quadro NVS 150M	95	1235	NA	NA
Quadro NVS 160M	93	1240	NA	NA
Quadro NVS 210S	23	1456	NA	NA
Quadro NVS 210S / GeForce 6150LE	20	1468	NA	NA
Quadro NVS 280 SD	2	1619	NA	NA
Quadro NVS 285	34	1411	0.39	\$89.00*
Quadro NVS 285 128MB	38	1400	0.70	\$55.00*
Quadro NVS 290	91	1249	3.68	\$24.99*
Quadro NVS 295	97	1230	2.81	\$34.75
Quadro NVS 320M	209	1071	NA	NA
Quadro NVS 420	101	1218	1.12	\$90.99*
Quadro NVS 440	38	1398	0.42	\$91.33*
Quadro NVS 450	91	1253	0.54	\$168.00*
Quadro NVS 55/280 PCI	6	1522	NA	NA
Quadro P1000	4884	98	15.26	\$319.99
Quadro P2000	8027	49	18.67	\$429.99
Quadro P3000	5003	95	NA	NA
Quadro P3200	8330	44	NA	NA
Quadro P400	1739	292	13.92	\$124.99
Quadro P4000	10526	22	13.16	\$799.95
Quadro P4000 with Max-Q Design	9082	32	NA	NA
Quadro P500	1594	308	NA	NA
Quadro P5000	10216	25	5.71	\$1,789.99
Quadro P5200	12025	13	NA	NA
Quadro P600	3057	180	17.67	\$173.02
Quadro P6000	13581	6	2.85	\$4,762.99*
Quadro P620	3743	145	20.97	\$178.51
Quadro2 Pro	1	1628	NA	NA
Quadro4 380 XGL	6	1516	NA	NA
Quadro4 980 XGL	5	1545	0.01	\$341.43*
Radeon 2100	60	1331	0.46	\$131.99
Radeon 3000	99	1224	1.63	\$60.99*
Radeon 3100	74	1290	0.44	\$169.99
Radeon 520	760	616	NA	NA
Radeon 530	1182	396	NA	NA
Radeon 540	1643	303	NA	NA
Radeon 6600M	737	639	NA	NA
RADEON 7000 / RADEON VE Family	3	1578	NA	NA
RADEON 7500	3	1597	0.10	\$32.12*
Videocard Name	Passmark G3D Mark (higher is better)	Rank (lower is better)	Videocard Value (higher is better)	Price (USD)
RADEON 7500 Family	4	1547	NA	NA
RADEON 9000 Family	3	1588	NA	NA
RADEON 9100 Family	5	1526	NA	NA
RADEON 9100 IGP	5	1538	NA	NA

Videocard Name	Passmark G3D Mark (higher is better)	Rank (lower is better)	Videocard Value (higher is better)	Price (USD)
RADEON 9200	3	1585	0.09	\$39.95*
RADEON 9200 LE Family	2	1613	NA	NA
RADEON 9200 PRO Family	2	1606	NA	NA
RADEON 9200 SE	2	1616	NA	NA
RADEON 9250	2	1614	0.06	\$42.99*
RADEON 9500	36	1406	0.90	\$40.50*
RADEON 9500 PRO / 9700	41	1385	NA	NA
RADEON 9550	34	1414	1.08	\$31.88*
Radeon 9550 / X1050	29	1436	NA	NA
RADEON 9600 Family	26	1445	NA	NA
RADEON 9600 PRO Family	26	1446	NA	NA
RADEON 9600 TX Family	18	1473	NA	NA
RADEON 9600 XT	35	1410	NA	NA
RADEON 9600SE	27	1440	NA	NA
RADEON 9700 PRO	53	1347	NA	NA
RADEON 9800 PRO	59	1333	NA	NA
RADEON 9800 SE	23	1457	NA	NA
RADEON 9800 XT	53	1348	NA	NA
RADEON E4690	405	934	NA	NA
Radeon E6760	962	498	4.01	\$239.99*
Radeon E8860	1577	312	NA	NA
Radeon HD 2350	76	1285	NA	NA
Radeon HD 2400	121	1170	NA	NA
Radeon HD 2400 PCI	14	1485	NA	NA
Radeon HD 2400 Pro	116	1182	NA	NA
Radeon HD 2400 XT	120	1173	NA	NA
Radeon HD 2600 PRO	211	1068	NA	NA
Radeon HD 2600 Pro AGP	110	1197	NA	NA
Radeon HD 2600 XT	284	1006	NA	NA
Radeon HD 2900 GT	292	1001	NA	NA
Radeon HD 2900 PRO	627	746	NA	NA
Radeon HD 2900 XT	653	720	NA	NA
Radeon HD 3200	82	1271	NA	NA
Radeon HD 3300	127	1161	NA	NA
Radeon HD 3450	119	1174	1.64	\$72.99*
Radeon HD 3470	146	1135	NA	NA
Radeon HD 3650 AGP	150	1130	NA	NA
Radeon HD 3670	243	1039	NA	NA
Radeon HD 3850	529	849	NA	NA
Radeon HD 3850 AGP	470	893	NA	NA
Radeon HD 3850 X2	792	589	NA	NA
Radeon HD 3870	719	653	12.41	\$58.00*
Radeon HD 3870 X2	873	541	NA	NA
Radeon HD 4200	113	1192	NA	NA
Radeon HD 4250	123	1167	NA	NA
Videocard Name	Passmark G3D Mark (higher is better)	Rank (lower is better)	Videocard Value (higher is better)	Price (USD)
Radeon HD 4270	111	1196	NA	NA
Radeon HD 4290	142	1140	NA	NA
Radeon HD 4300/4500 Serisi	155	1128	NA	NA

Videocard Name	Passmark G3D Mark (higher is better)	Rank (lower is better)	Videocard Value (higher is better)	Price (USD)
Radeon HD 4330	160	1126	NA	NA
Radeon HD 4350	169	1120	2.78	\$61.10*
Radeon HD 4550	238	1043	1.88	\$126.99*
Radeon HD 4650	337	972	2.70	\$124.99*
Radeon HD 4650 AGP	263	1025	NA	NA
Radeon HD 4670	546	835	4.97	\$109.99*
Radeon HD 4770	1039	452	NA	NA
Radeon HD 4810	796	586	NA	NA
Radeon HD 4830	954	501	15.91	\$59.99*
Radeon HD 4850	1025	459	11.40	\$89.99*
Radeon HD 4850 X2	1147	407	NA	NA
Radeon HD 4870	1382	342	23.04	\$59.99*
Radeon HD 4870 X2	1310	362	NA	NA
Radeon HD 4890	1538	318	13.99	\$109.99*
Radeon HD 5450	231	1050	6.62	\$34.99*
Radeon HD 5470	268	1019	NA	NA
Radeon HD 5550	544	839	9.91	\$54.99*
Radeon HD 5570	713	661	4.24	\$168.40*
Radeon HD 5600/5700	963	497	NA	NA
Radeon HD 5670	1080	431	22.60	\$47.84*
Radeon HD 5750	1437	330	20.72	\$69.41*
Radeon HD 5770	1706	297	14.71	\$115.99*
Radeon HD 5830	2047	251	12.79	\$159.99*
Radeon HD 5850	2277	223	28.47	\$79.99*
Radeon HD 5870	2616	206	26.17	\$99.99*
Radeon HD 5970	2595	209	7.87	\$329.99*
Radeon HD 6230	211	1069	NA	NA
Radeon HD 6250	119	1175	NA	NA
Radeon HD 6290	138	1145	NA	NA
Radeon HD 6290M	137	1146	NA	NA
Radeon HD 6300M	255	1036	NA	NA
Radeon HD 6310	169	1118	NA	NA
Radeon HD 6320	202	1081	0.37	\$554.99*
Radeon HD 6320 Graphic	216	1059	NA	NA
Radeon HD 6320M	198	1086	NA	NA
RADEON HD 6350	214	1063	4.21	\$50.99*
Radeon HD 6370D	311	989	NA	NA
Radeon HD 6370M	274	1014	NA	NA
Radeon HD 6380G	296	998	0.74	\$399.99*
Radeon HD 6410D	389	941	NA	NA
Radeon HD 6430M	193	1092	NA	NA
Radeon HD 6450	278	1011	6.19	\$44.99
Radeon HD 6450A	260	1029	NA	NA
Radeon HD 6470M	313	987	0.55	\$569.99*
Radeon HD 6480G	407	930	NA	NA
Radeon HD 6490M	380	944	0.32	\$1,193.03*
Videocard Name	Passmark G3D Mark (higher is better)	Rank (lower is better)	Videocard Value (higher is better)	Price (USD)
Radeon HD 6520G	487	876	NA	NA
Radeon HD 6530D	514	859	NA	NA

Videocard Name	Passmark G3D Mark (higher is better)	Rank (lower is better)	Videocard Value (higher is better)	Price (USD)
Radeon HD 6550A	707	668	NA	NA
Radeon HD 6550D	648	725	NA	NA
Radeon HD 6570	760	615	15.22	\$49.99*
Radeon HD 6610M	565	806	NA	NA
Radeon HD 6620G	558	813	NA	NA
Radeon HD 6630M	684	690	NA	NA
Radeon HD 6650M	718	655	NA	NA
Radeon HD 6670	1059	440	10.28	\$102.99*
Radeon HD 6670 + 6670 Dual	646	726	NA	NA
Radeon HD 6700M	1008	467	NA	NA
Radeon HD 6750	1316	357	26.34	\$49.99*
Radeon HD 6750M	939	507	NA	NA
Radeon HD 6770	1678	299	21.80	\$76.99*
Radeon HD 6770M	964	495	NA	NA
Radeon HD 6790	2043	252	31.44	\$64.99*
Radeon HD 6800M	985	483	NA	NA
Radeon HD 6850	2281	222	22.82	\$99.99*
Radeon HD 6870	2606	208	28.97	\$89.99*
Radeon HD 6900M	1939	266	NA	NA
Radeon HD 6950	3207	168	35.65	\$89.99*
Radeon HD 6970	3515	156	37.01	\$94.99*
Radeon HD 6990	2858	193	17.87	\$159.99*
Radeon HD 7290	140	1143	NA	NA
Radeon HD 7290M	123	1168	NA	NA
Radeon HD 7310	171	1114	NA	NA
Radeon HD 7310G	180	1108	NA	NA
Radeon HD 7310M	166	1122	NA	NA
Radeon HD 7340	208	1075	0.38	\$552.69*
Radeon HD 7340G	196	1087	NA	NA
Radeon HD 7340M	221	1054	NA	NA
Radeon HD 7350	279	1009	NA	NA
Radeon HD 7400G	325	977	NA	NA
Radeon HD 7420G	434	914	NA	NA
Radeon HD 7450	312	988	3.68	\$84.99*
Radeon HD 7450A	288	1004	NA	NA
Radeon HD 7450M	329	976	NA	NA
Radeon HD 7470	365	951	NA	NA
Radeon HD 7470M	407	931	NA	NA
Radeon HD 7480D	427	920	NA	NA
Radeon HD 7500G	413	928	NA	NA
Radeon HD 7500G + 7500M/7600M Dual	616	756	NA	NA
Radeon HD 7500G + 7550M Dual	497	873	NA	NA
Radeon HD 7500G + HD 7500M/7600M Dual	355	956	NA	NA
Radeon HD 7520G	449	905	NA	NA
Radeon HD 7520G + 7400M Dual	486	877	NA	NA
Radeon HD 7520G + 7600M Dual	591	785	NA	NA
Radeon HD 7520G + 7610M Dual	588	789	NA	NA
Videocard Name	Passmark G3D Mark (higher is better)	Rank (lower is better)	Videocard Value (higher is better)	Price (USD)
Radeon HD 7520G + 7650M Dual	453	903	NA	NA

Videocard Name	Passmark G3D Mark (higher is better)	Rank (lower is better)	Videocard Value (higher is better)	Price (USD)
Radeon HD 7520G + 7670M Dual	525	854	NA	NA
Radeon HD 7520G + 7700M Dual	1060	437	NA	NA
Radeon HD 7520G + 8600/8700M Dual	311	990	NA	NA
Radeon HD 7520G + HD 7400M Dual	544	840	NA	NA
Radeon HD 7520G + HD 7600M Dual	612	762	NA	NA
Radeon HD 7520G + HD 7670M Dual	548	829	NA	NA
Radeon HD 7520G + HD 8600/8700M Dual	623	751	NA	NA
Radeon HD 7520G + HD 8750M Dual	651	721	NA	NA
Radeon HD 7540D	511	862	NA	NA
Radeon HD 7540D + 6570 Dual	719	654	NA	NA
Radeon HD 7550M	473	891	NA	NA
Radeon HD 7550M/7650M	732	641	NA	NA
Radeon HD 7560D	660	712	NA	NA
Radeon HD 7560D + 6570 Dual	833	564	NA	NA
Radeon HD 7560D + 6670 Dual	1130	411	NA	NA
Radeon HD 7560D + 7560D Dual	982	485	NA	NA
Radeon HD 7560D + 7670 Dual	1426	334	NA	NA
Radeon HD 7560D + HD 7000 Dual	534	844	NA	NA
Radeon HD 7560D + HD 7700 Dual	1346	350	NA	NA
Radeon HD 7560D + R5 235 Dual	563	809	NA	NA
Radeon HD 7570	982	486	NA	NA
Radeon HD 7570M	611	763	NA	NA
Radeon HD 7570M/HD 7670M	699	677	NA	NA
Radeon HD 7580D	350	963	NA	NA
Radeon HD 7600G	479	884	NA	NA
Radeon HD 7600G + 7450M Dual	389	940	NA	NA
Radeon HD 7600G + 7500M/7600M Dual	405	932	NA	NA
Radeon HD 7600G + 7550M Dual	423	921	NA	NA
Radeon HD 7600G + 8500M/8700M Dual	469	895	NA	NA
Radeon HD 7600G + HD 7500M/7600M Dual	555	819	NA	NA
Radeon HD 7600G + HD 7550M Dual	509	865	NA	NA
Radeon HD 7600G + HD 8670M Dual	543	841	NA	NA
Radeon HD 7600G + HD Dual	442	909	NA	NA
Radeon HD 7600M + 7600M Dual	773	604	NA	NA
Radeon HD 7610M	630	744	NA	NA
Radeon HD 7620G	490	875	NA	NA
Radeon HD 7620G + 8600M Dual	503	868	NA	NA
Radeon HD 7620G + 8670M Dual	577	798	NA	NA
Radeon HD 7620G + HD 8600M Dual	442	908	NA	NA
Radeon HD 7620G + HD 8670M Dual	507	866	NA	NA
Radeon HD 7640G	613	761	NA	NA
Radeon HD 7640G + 6400M Dual	526	853	NA	NA
Radeon HD 7640G + 7400M Dual	637	735	NA	NA
Radeon HD 7640G + 7470M Dual	595	782	NA	NA
Radeon HD 7640G + 7500/7600 Dual	627	747	NA	NA
Radeon HD 7640G + 7600M Dual	705	671	NA	NA
Radeon HD 7640G + 7610M Dual	510	863	NA	NA
Radeon HD 7640G + 7670M Dual	644	730	NA	NA
Videocard Name	Passmark G3D Mark (higher is better)	Rank (lower is better)	Videocard Value (higher is better)	Price (USD)

Videocard Name	Passmark G3D Mark (higher is better)	Rank (lower is better)	Videocard Value (higher is better)	Price (USD)
Radeon HD 7640G + 7700M Dual	690	685	NA	NA
Radeon HD 7640G + 8500M Dual	585	793	NA	NA
Radeon HD 7640G + 8570M Dual	558	812	NA	NA
Radeon HD 7640G + 8600/8700M Dual	688	686	NA	NA
Radeon HD 7640G + 8670M Dual	558	811	NA	NA
Radeon HD 7640G + 8750M Dual	654	718	NA	NA
Radeon HD 7640G + HD 7400M Dual	606	769	NA	NA
Radeon HD 7640G + HD 7600M Dual	706	670	NA	NA
Radeon HD 7640G + HD 7670M Dual	659	715	NA	NA
Radeon HD 7640G + HD 7700M Dual	589	786	NA	NA
Radeon HD 7640G + HD 8500M Dual	607	768	NA	NA
Radeon HD 7640G + HD 8500M N HD 8500M Dual	665	704	NA	NA
Radeon HD 7640G + HD 8570M Dual	696	679	NA	NA
Radeon HD 7640G + HD 8600/8700M Dual	586	792	NA	NA
Radeon HD 7640G + HD 8750M Dual	992	477	NA	NA
Radeon HD 7640G + R5 M200 Dual	515	858	NA	NA
Radeon HD 7640G N HD 7640G + HD 7600M N HD 7600M D	824	570	NA	NA
Radeon HD 7640G N HD 7640G + HD 7670M Dual	679	694	NA	NA
Radeon HD 7650A	793	588	3.03	\$262.00*
Radeon HD 7650M	721	651	NA	NA
Radeon HD 7660D	784	595	NA	NA
Radeon HD 7660D + 6570 Dual	1100	424	NA	NA
Radeon HD 7660D + 6670 Dual	1238	383	NA	NA
Radeon HD 7660D + 7470 Dual	465	897	NA	NA
Radeon HD 7660D + 7670 Dual	1061	436	NA	NA
Radeon HD 7660D + HD 6670 Dual	1484	325	NA	NA
Radeon HD 7660D + HD 7000 Dual	633	742	NA	NA
Radeon HD 7660D + HD 7700 Dual	1958	263	NA	NA
Radeon HD 7660D + R7 240 Dual	941	506	NA	NA
Radeon HD 7660G	797	584	NA	NA
Radeon HD 7660G + 7400M Dual	588	790	NA	NA
Radeon HD 7660G + 7470M Dual	630	745	NA	NA
Radeon HD 7660G + 7600M Dual	831	565	NA	NA
Radeon HD 7660G + 7610M Dual	744	631	NA	NA
Radeon HD 7660G + 7670M Dual	743	633	NA	NA
Radeon HD 7660G + 7700M Dual	757	621	NA	NA
Radeon HD 7660G + 7730M Dual	931	511	NA	NA
Radeon HD 7660G + 8600M Dual	445	907	NA	NA
Radeon HD 7660G + 8670M Dual	587	791	NA	NA
Radeon HD 7660G + HD 7500M/7600M Dual	999	472	NA	NA
Radeon HD 7660G + HD 7600M Dual	780	600	NA	NA
Radeon HD 7660G + HD 7670M Dual	706	669	NA	NA
Radeon HD 7660G + HD 7700M Dual	751	626	NA	NA
Radeon HD 7660G + HD 7730M Dual	881	534	NA	NA
Radeon HD 7660G + HD 8670M Dual	711	664	NA	NA
Radeon HD 7660G N HD 7660G + HD 7600M N HD 7600M D	722	648	NA	NA

Videocard Name	Passmark G3D Mark (higher is better)	Rank (lower is better)	Videocard Value (higher is better)	Price (USD)
Radeon HD 7660G N HD 7660G + HD 7670M Dual	704	672	NA	NA
Radeon HD 7660G N HD 7660G + HD 7700M N HD 7700M D	966	494	NA	NA
Radeon HD 7670	1103	422	NA	NA
Videocard Name	Passmark G3D Mark (higher is better)	Rank (lower is better)	Videocard Value (higher is better)	Price (USD)
Radeon HD 7670A	1048	445	NA	NA
Radeon HD 7670M	813	576	1.29	\$629.99*
Radeon HD 7670M + 7670M Dual	738	638	NA	NA
Radeon HD 7690M	1003	469	NA	NA
Radeon HD 7690M XT	1009	466	NA	NA
Radeon HD 7730	1432	332	28.65	\$49.99*
Radeon HD 7730M	994	475	NA	NA
Radeon HD 7750	1701	298	9.50	\$179.00
Radeon HD 7750M	1191	393	NA	NA
Radeon HD 7770	2214	233	10.31	\$214.86
Radeon HD 7790	3062	178	22.69	\$134.99*
Radeon HD 7850	3837	141	8.54	\$449.59
Radeon HD 7850M	1372	344	NA	NA
Radeon HD 7870	4367	117	14.61	\$299.00
Radeon HD 7870 XT	4450	111	NA	NA
Radeon HD 7870M	1477	326	NA	NA
Radeon HD 7950 / R9 280	4764	101	12.09	\$393.98
Radeon HD 7970 / R9 280X	5247	89	17.21	\$305.00
Radeon HD 7970M	3811	142	NA	NA
Radeon HD 7990	5517	82	4.90	\$1,126.99*
Radeon HD 8180	198	1084	NA	NA
Radeon HD 8210	252	1037	NA	NA
Radeon HD 8240	279	1010	NA	NA
Radeon HD 8250	258	1031	NA	NA
Radeon HD 8280	320	982	NA	NA
Radeon HD 8280E	323	979	NA	NA
Radeon HD 8280G	269	1018	NA	NA
Radeon HD 8330	337	971	NA	NA
Radeon HD 8330E	319	983	NA	NA
Radeon HD 8350	265	1021	1.89	\$139.99*
Radeon HD 8350G	432	915	NA	NA
Radeon HD 8370D	430	918	NA	NA
Radeon HD 8400	359	954	NA	NA
Radeon HD 8400E	341	968	NA	NA
Radeon HD 8410G	435	913	NA	NA
Radeon HD 8450G	414	927	NA	NA
Radeon HD 8450G + 8600M Dual	545	838	NA	NA
Radeon HD 8450G + 8670M Dual	474	887	NA	NA
Radeon HD 8450G + 8750M Dual	637	736	NA	NA
Radeon HD 8450G + HD 8600M Dual	452	904	NA	NA
Radeon HD 8450G + HD 8750M Dual	483	879	NA	NA
Radeon HD 8470	343	967	NA	NA
Radeon HD 8470D	517	855	NA	NA
Radeon HD 8470D + 6450 Dual	717	658	NA	NA

Videocard Name	Passmark G3D Mark (higher is better)	Rank (lower is better)	Videocard Value (higher is better)	Price (USD)
Radeon HD 8490	380	943	NA	NA
Radeon HD 8500M	557	815	NA	NA
Radeon HD 8500M/8700M	863	549	NA	NA
Radeon HD 8510G	509	864	NA	NA
Radeon HD 8510G + 8500M Dual	596	781	NA	NA
Videocard Name	Passmark G3D Mark (higher is better)	Rank (lower is better)	Videocard Value (higher is better)	Price (USD)
Radeon HD 8550D	685	689	NA	NA
Radeon HD 8550G	725	647	NA	NA
Radeon HD 8550G + 8500M Dual	602	773	NA	NA
Radeon HD 8550G + 8570M Dual	532	846	NA	NA
Radeon HD 8550G + 8600/8700M Dual	802	582	NA	NA
Radeon HD 8550G + 8600M Dual	617	755	NA	NA
Radeon HD 8550G + 8670M Dual	579	797	NA	NA
Radeon HD 8550G + 8690M Dual	664	706	NA	NA
Radeon HD 8550G + 8750M Dual	795	587	NA	NA
Radeon HD 8550G + HD 7600M Dual	854	554	NA	NA
Radeon HD 8550G + HD 8570M Dual	529	851	NA	NA
Radeon HD 8550G + HD 8600/8700M Dual	813	577	NA	NA
Radeon HD 8550G + HD 8600M Dual	593	783	NA	NA
Radeon HD 8550G + HD 8670M Dual	546	836	NA	NA
Radeon HD 8550G + HD 8750M Dual	819	575	NA	NA
Radeon HD 8550G + R5 M200 Dual	619	754	NA	NA
Radeon HD 8550G + R5 M230 Dual	667	700	NA	NA
Radeon HD 8570	988	480	NA	NA
Radeon HD 8570 + 8670D Dual	620	752	NA	NA
Radeon HD 8570D	680	692	NA	NA
Radeon HD 8570D + 6570 Dual	1239	381	NA	NA
Radeon HD 8570D + HD 6570 Dual	868	546	NA	NA
Radeon HD 8570D + HD 6670 Dual	1260	377	NA	NA
Radeon HD 8570D + HD 7000 Dual	753	625	NA	NA
Radeon HD 8570D + HD 7700 Dual	1834	278	NA	NA
Radeon HD 8570D + HD 8570 Dual	1032	455	NA	NA
Radeon HD 8570D + R7 200 Dual	999	471	NA	NA
Radeon HD 8570D + R7 240 Dual	963	496	NA	NA
Radeon HD 8570M	534	845	NA	NA
Radeon HD 8600/8700M	1020	461	NA	NA
Radeon HD 8610G	550	826	NA	NA
Radeon HD 8610G + 8500M Dual	610	766	NA	NA
Radeon HD 8610G + 8600M Dual	588	788	NA	NA
Radeon HD 8610G + 8670M Dual	599	776	NA	NA
Radeon HD 8610G + HD 8500M Dual	645	728	NA	NA
Radeon HD 8610G + HD 8600M Dual	579	796	NA	NA
Radeon HD 8610G + HD 8670M Dual	574	800	NA	NA
Radeon HD 8610G + R5 M200 Dual	676	697	NA	NA
Radeon HD 8650D	548	830	NA	NA
Radeon HD 8650G	935	508	NA	NA
Radeon HD 8650G + 7600M Dual	741	636	NA	NA
Radeon HD 8650G + 7670M Dual	883	533	NA	NA
Radeon HD 8650G + 8500M Dual	626	748	NA	NA

Videocard Name	Passmark G3D Mark (higher is better)	Rank (lower is better)	Videocard Value (higher is better)	Price (USD)
Radeon HD 8650G + 8570M Dual	654	719	NA	NA
Radeon HD 8650G + 8600/8700M Dual	835	563	NA	NA
Radeon HD 8650G + 8600M Dual	613	760	NA	NA
Radeon HD 8650G + 8670M Dual	638	734	NA	NA
Radeon HD 8650G + 8750M Dual	787	593	NA	NA
Radeon HD 8650G + HD 7600M Dual	819	574	NA	NA
Videocard Name	Passmark G3D Mark (higher is better)	Rank (lower is better)	Videocard Value (higher is better)	Price (USD)
Radeon HD 8650G + HD 7670M Dual	634	740	NA	NA
Radeon HD 8650G + HD 8570M Dual	716	659	NA	NA
Radeon HD 8650G + HD 8600/8700M Dual	765	612	NA	NA
Radeon HD 8650G + HD 8600M Dual	597	779	NA	NA
Radeon HD 8650G + HD 8670M Dual	589	787	NA	NA
Radeon HD 8650G + HD 8750M Dual	783	597	NA	NA
Radeon HD 8650G + R5 M200 Dual	722	649	NA	NA
Radeon HD 8650G + R5 M230 Dual	686	688	NA	NA
Radeon HD 8650G N HD 8650G + HD 8570M Dual	773	605	NA	NA
Radeon HD 8650G N HD 8650G + HD 8600M N HD 8600M D	679	693	NA	NA
Radeon HD 8670D	789	591	NA	NA
Radeon HD 8670D + 6670 Dual	1361	347	NA	NA
Radeon HD 8670D + 7700 Dual	1788	286	NA	NA
Radeon HD 8670D + HD 6670 Dual	1221	386	NA	NA
Radeon HD 8670D + HD 7000 Dual	718	656	NA	NA
Radeon HD 8670D + R5 235 Dual	836	561	NA	NA
Radeon HD 8670D + R7 200 Dual	949	503	NA	NA
Radeon HD 8670D + R7 240 Dual	1020	462	NA	NA
Radeon HD 8670M	513	860	NA	NA
Radeon HD 8690A	919	518	NA	NA
Radeon HD 8690M	984	484	NA	NA
Radeon HD 8730M	980	487	NA	NA
Radeon HD 8750M	1059	439	NA	NA
Radeon HD 8790M	1321	355	NA	NA
Radeon HD 8790M / R9 M290X	1236	384	NA	NA
Radeon HD 8850M	929	513	NA	NA
Radeon HD 8850M / R9 M265X	1139	408	NA	NA
Radeon HD 8870M	1638	305	NA	NA
Radeon HD 8870M / R9 M270X / M370X	1799	284	NA	NA
Radeon HD 8950	3015	184	NA	NA
Radeon HD 8970M	3876	139	NA	NA
Radeon HD 8990	4892	97	NA	NA
RADEON HD6370D	331	975	NA	NA
RADEON HD6410D	422	922	NA	NA
RADEON HD6530D	531	847	NA	NA
Radeon HD7570	1028	456	NA	NA
Radeon HD8490	368	946	NA	NA
Radeon HD8530M	498	871	NA	NA
Radeon HD8970M	3131	173	NA	NA
Radeon IGP 320M	3	1587	NA	NA
Radeon IGP 340M	2	1618	NA	NA

Videocard Name	Passmark G3D Mark (higher is better)	Rank (lower is better)	Videocard Value (higher is better)	Price (USD)
RADEON IGP 345M	2	1611	NA	NA
RADEON IGP 350M	6	1524	NA	NA
Radeon Pro 450	2722	201	NA	NA
Radeon Pro 460	3452	160	NA	NA
Radeon Pro 555	3140	172	NA	NA
Radeon Pro 560	3553	152	NA	NA
Radeon Pro Duo	9462	28	10.51	\$899.99
Radeon Pro Vega 56	12004	14	NA	NA
Videocard Name	Passmark G3D Mark (higher is better)	Rank (lower is better)	Videocard Value (higher is better)	Price (USD)
Radeon Pro Vega 64	13168	8	NA	NA
Radeon Pro WX 2100	1937	267	NA	NA
Radeon Pro WX 3100	3589	150	NA	NA
Radeon Pro WX 4100	3982	136	14.22	\$279.99
Radeon Pro WX 4130	2767	199	NA	NA
Radeon Pro WX 4150	3427	161	NA	NA
Radeon Pro WX 5100	5555	80	14.25	\$389.99
Radeon Pro WX 7100	7815	52	13.03	\$599.99
Radeon Pro WX 9100	11036	20	NA	NA
Radeon Pro WX4100	3949	137	NA	NA
Radeon R2	303	994	NA	NA
Radeon R2E	257	1032	NA	NA
Radeon R3	372	945	NA	NA
Radeon R3E	256	1033	NA	NA
Radeon R4	398	938	NA	NA
Radeon R5 220	233	1047	NA	NA
Radeon R5 230	235	1045	6.36	\$36.99
Radeon R5 235	366	949	NA	NA
Radeon R5 235 + HD 7560D Dual	743	632	NA	NA
Radeon R5 235X	367	947	NA	NA
Radeon R5 240	662	709	12.51	\$52.99
Radeon R5 310	337	973	0.77	\$439.00
Radeon R5 330	636	737	1.72	\$369.99*
Radeon R5 340	1066	434	NA	NA
Radeon R5 420	757	619	NA	NA
Radeon R5 430	1036	454	NA	NA
Radeon R5 A10-9600P RADEON R5, 10 COMPUTE CORES 4C	803	579	NA	NA
Radeon R5 A10-9620P RADEON R5, 10 COMPUTE CORES 4C	767	609	NA	NA
Radeon R5 A10-9630P RADEON R5, 10 COMPUTE CORES 4C	1463	327	NA	NA
Radeon R5 A6-9500 RADEON R5, 8 COMPUTE CORES 2C+6G	1048	446	NA	NA
Radeon R5 M230	571	801	NA	NA
Radeon R5 M240	556	816	NA	NA
Radeon R5 M255	755	622	NA	NA
Radeon R5 M315	609	767	NA	NA
Radeon R5 M320	598	778	NA	NA
Radeon R5 M330	596	780	NA	NA
Radeon R5 M335	555	818	NA	NA

Videocard Name	Passmark G3D Mark (higher is better)	Rank (lower is better)	Videocard Value (higher is better)	Price (USD)
Radeon R5 M430	644	729	NA	NA
Radeon R5 M435	1108	418	NA	NA
Radeon R5 Opteron X3216	438	912	NA	NA
Radeon R5 PRO A10-8730B R5, 10 COMPUTE CORES 4C+6G	864	548	NA	NA
Radeon R5 PRO A6-8530B R5, 6 COMPUTE CORES 2C+4G	715	660	NA	NA
Radeon R5 PRO A6-8570 R5, 8 COMPUTE CORES 2C+6G	1060	438	NA	NA
Radeon R5 PRO A6-8570E R5, 6 COMPUTE CORES 2C+4G	839	559	NA	NA
Radeon R5 PRO A6-9500B R5, 6 COMPUTE CORES 2C+4G	693	681	NA	NA
Radeon R5 PRO A6-9500E R5, 6 COMPUTE CORES 2C+4G	955	500	NA	NA
Radeon R5 PRO A8-9600B R5, 10 COMPUTE CORES 4C+6G	860	551	NA	NA
Radeon R5E	338	970	NA	NA
Radeon R6	642	732	NA	NA
Videocard Name	Passmark G3D Mark (higher is better)	Rank (lower is better)	Videocard Value (higher is better)	Price (USD)
Radeon R6 + R7 M265DX Dual	570	802	NA	NA
Radeon R6 A10-8700P	692	683	NA	NA
Radeon R6 A8-8600P	501	870	NA	NA
Radeon R6 PRO A10-8700B R6, 10 Compute Cores 4C+6G	563	810	NA	NA
Radeon R6 PRO A8-8600B R6, 10 Compute Cores 4C+6G	600	775	NA	NA
Radeon R7 + HD 7700 Dual	1962	262	NA	NA
Radeon R7 + R5 330 Dual	1028	457	NA	NA
Radeon R7 + R5 435 Dual A10-9700 RADEON	885	531	NA	NA
Radeon R7 + R7 200 Dual	1289	368	NA	NA
Radeon R7 + R7 240 Dual	1045	448	NA	NA
Radeon R7 + R7 350 Dual	1982	259	NA	NA
Radeon R7 240	976	489	17.75	\$54.99
Radeon R7 240 + HD 8570D Dual	917	519	NA	NA
Radeon R7 240 + HD 8670D Dual	930	512	NA	NA
Radeon R7 250	1407	339	19.48	\$72.26
Radeon R7 250X	2268	224	8.70	\$260.69*
Radeon R7 260	2891	190	32.13	\$89.99*
Radeon R7 260X	3156	170	13.21	\$239.00
Radeon R7 340	1041	450	NA	NA
Radeon R7 360	3304	166	22.53	\$146.65*
Radeon R7 370	4662	106	NA	NA
Radeon R7 430	1421	335	NA	NA
Radeon R7 450	2175	239	24.73	\$87.95
Radeon R7 A10 Extreme Edition	824	569	NA	NA
Radeon R7 A10 PRO-7800B	867	547	NA	NA
Radeon R7 A10 PRO-7850B	1008	468	NA	NA
Radeon R7 A10-7700K	899	527	NA	NA
Radeon R7 A10-7800	886	530	NA	NA
Radeon R7 A10-7850K	1021	460	NA	NA

Videocard Name	Passmark G3D Mark (higher is better)	Rank (lower is better)	Videocard Value (higher is better)	Price (USD)
Radeon R7 A10-7860K	998	473	NA	NA
Radeon R7 A10-7870K	1134	409	NA	NA
Radeon R7 A10-7890K	1174	399	NA	NA
Radeon R7 A10-8750	986	482	NA	NA
Radeon R7 A10-8850	1098	425	NA	NA
Radeon R7 A10-9700 RADEON	1207	387	NA	NA
Radeon R7 A10-9700E RADEON	1105	420	NA	NA
Radeon R7 A12-9700P RADEON	734	640	NA	NA
Radeon R7 A12-9720P RADEON	912	521	NA	NA
Radeon R7 A12-9730P RADEON	879	537	NA	NA
Radeon R7 A12-9800 RADEON	1239	380	NA	NA
Radeon R7 A12-9800E RADEON	1185	394	NA	NA
Radeon R7 A265	987	481	NA	NA
Radeon R7 A370	1281	370	NA	NA
Radeon R7 A8 PRO-7600B	725	646	NA	NA
Radeon R7 A8-7500	1027	458	NA	NA
Radeon R7 A8-7500 Radeon R7, 10 Compute Cores 4C+6	853	555	NA	NA
Radeon R7 A8-7600	932	510	NA	NA
Radeon R7 A8-7650K	869	544	NA	NA
Radeon R7 A8-7670K	850	556	NA	NA
Videocard Name	Passmark G3D Mark (higher is better)	Rank (lower is better)	Videocard Value (higher is better)	Price (USD)
Radeon R7 A8-8650	910	523	NA	NA
Radeon R7 A8-9600 RADEON	1111	417	NA	NA
Radeon R7 FX-8800P	797	585	NA	NA
Radeon R7 FX-9800P RADEON	857	553	1.72	\$499.05
Radeon R7 FX-9830P RADEON	1768	288	NA	NA
Radeon R7 M260	663	707	0.83	\$799.00*
Radeon R7 M260X	1098	426	NA	NA
Radeon R7 M265	820	573	NA	NA
Radeon R7 M270	745	630	NA	NA
Radeon R7 M340	761	614	NA	NA
Radeon R7 M350	1198	391	NA	NA
Radeon R7 M360	711	663	NA	NA
Radeon R7 M365X	901	526	NA	NA
Radeon R7 M370	1410	338	NA	NA
Radeon R7 M440	960	499	NA	NA
Radeon R7 M445	1054	443	NA	NA
Radeon R7 M460	1058	441	NA	NA
Radeon R7 M465	1306	364	NA	NA
Radeon R7 M465X	2057	250	NA	NA
Radeon R7 Opteron X3421	971	491	NA	NA
Radeon R7 PRO A10-8750B	921	517	NA	NA
Radeon R7 PRO A10-8770	1319	356	NA	NA
Radeon R7 PRO A10-8770E	1185	395	NA	NA
Radeon R7 PRO A10-8850B	945	505	NA	NA
Radeon R7 PRO A10-9700	1367	345	NA	NA
Radeon R7 PRO A10-9700B	1082	428	NA	NA
Radeon R7 PRO A10-9700E	1127	412	NA	NA

Videocard Name	Passmark G3D Mark (higher is better)	Rank (lower is better)	Videocard Value (higher is better)	Price (USD)
Radeon R7 PRO A12-8800B	782	598	NA	NA
Radeon R7 PRO A12-8830B	979	488	NA	NA
Radeon R7 PRO A12-8870	1375	343	NA	NA
Radeon R7 PRO A12-8870E	1160	403	NA	NA
Radeon R7 PRO A12-9800	1346	349	NA	NA
Radeon R7 PRO A12-9800B	877	539	NA	NA
Radeon R7 PRO A12-9800E	1042	449	NA	NA
Radeon R7 PRO A8-8650B	868	545	NA	NA
Radeon R7 PRO A8-9600	1082	429	NA	NA
Radeon R9 255	1772	287	5.11	\$347.07
Radeon R9 260	3018	183	NA	NA
Radeon R9 270 / R7 370	4261	124	28.88	\$147.56
Radeon R9 270X	4682	104	15.66	\$299.00
Radeon R9 280	5394	85	NA	NA
Radeon R9 280X	5848	75	NA	NA
Radeon R9 285 / 380	5553	81	14.61	\$380.00
Radeon R9 290 / 390	7111	61	9.03	\$787.12
Radeon R9 290X / 390X	7394	58	10.73	\$688.88
Radeon R9 295X2	7664	54	6.97	\$1,099.99*
Radeon R9 350	2264	225	28.29	\$80.05
Radeon R9 360	3038	181	5.86	\$519.00*
Radeon R9 370	4722	103	NA	NA
Videocard Name	Passmark G3D Mark (higher is better)	Rank (lower is better)	Videocard Value (higher is better)	Price (USD)
Radeon R9 380	6106	68	23.04	\$264.99*
Radeon R9 380X	6176	66	24.71	\$249.99*
Radeon R9 390	8078	48	NA	NA
Radeon R9 390X	8562	40	NA	NA
Radeon R9 Fury	9206	31	23.02	\$399.99*
Radeon R9 Fury + Fury X	8425	42	21.06	\$399.99*
Radeon R9 M265X	1271	373	NA	NA
Radeon R9 M270X	1417	336	NA	NA
Radeon R9 M275	1111	416	1.59	\$699.99
Radeon R9 M275X / M375	1487	324	NA	NA
Radeon R9 M290X	4093	131	NA	NA
Radeon R9 M295X	5150	91	NA	NA
Radeon R9 M360	1976	260	NA	NA
Radeon R9 M370X	1925	270	NA	NA
Radeon R9 M375	1250	378	NA	NA
Radeon R9 M375X	2095	246	NA	NA
Radeon R9 M380	3085	176	NA	NA
Radeon R9 M390X	4213	126	NA	NA
Radeon R9 M395	5006	94	NA	NA
Radeon R9 M395X	5762	77	NA	NA
Radeon R9 M470	2117	244	NA	NA
Radeon R9 M470X	3596	149	NA	NA
Radeon RX 460	4337	121	24.17	\$179.50
Radeon RX 470	7470	57	18.68	\$399.99
Radeon RX 480	8117	47	35.45	\$229.00
Radeon RX 550	3482	158	30.28	\$114.99

Videocard Name	Passmark G3D Mark (higher is better)	Rank (lower is better)	Videocard Value (higher is better)	Price (USD)
Radeon RX 560	4440	112	34.16	\$129.99
Radeon RX 570	6848	63	28.65	\$239.00
Radeon RX 580	8396	43	31.69	\$264.99
Radeon RX Vega	12297	11	25.62	\$479.99
Radeon RX Vega 10	1578	311	NA	NA
Radeon RX Vega 11	2353	219	NA	NA
Radeon RX Vega 56	11127	19	NA	NA
Radeon RX Vega 64	11640	15	20.07	\$579.99
Radeon RX Vega M GH	7047	62	NA	NA
Radeon RX Vega M GL	4852	100	NA	NA
Radeon RX480	3858	140	NA	NA
Radeon RX540	2787	197	NA	NA
Radeon RX550	3312	165	NA	NA
Radeon RX580	6494	65	NA	NA
Radeon TM R9 A360	2148	241	NA	NA
Radeon Vega 10	1895	272	NA	NA
Radeon Vega 10 Mobile	1038	453	NA	NA
Radeon Vega 11	2253	227	NA	NA
Radeon Vega 3	1014	464	NA	NA
Radeon Vega 6	1766	289	NA	NA
Radeon Vega 8	1965	261	NA	NA
Radeon Vega 8 Mobile	1677	300	NA	NA
Radeon Vega Frontier Edition	11563	16	11.01	\$1,049.99*
Videocard Name	Passmark G3D Mark (higher is better)	Rank (lower is better)	Videocard Value (higher is better)	Price (USD)
Radeon X1050	50	1357	NA	NA
Radeon X1200	32	1424	NA	NA
Radeon X1250	37	1404	NA	NA
Radeon X1270	31	1429	NA	NA
Radeon X1300	58	1340	0.57	\$101.99*
Radeon X1300 PRO	86	1259	NA	NA
Radeon X1550	65	1318	0.58	\$113.00*
Radeon X1550 64-bit	47	1369	NA	NA
Radeon X1600	49	1360	NA	NA
Radeon X1600 Pro	99	1225	NA	NA
Radeon X1600 Pro / X1300XT	69	1303	NA	NA
Radeon X1600 XT	115	1183	NA	NA
Radeon X1650 GTO	74	1288	NA	NA
Radeon X1650 Pro	84	1268	0.52	\$160.89*
Radeon X1650 SE	71	1298	NA	NA
Radeon X1700 Targa Edition	116	1180	NA	NA
Radeon X1800 GTO	140	1141	NA	NA
Radeon X1900 CrossFire Edition	137	1149	NA	NA
Radeon X1900 GT	145	1136	NA	NA
Radeon X1950 CrossFire Edition	151	1129	NA	NA
Radeon X1950 GT	109	1200	NA	NA
Radeon X1950 Pro	113	1187	NA	NA
RADEON X300SE	38	1401	NA	NA
RADEON X550	50	1353	NA	NA
RADEON X550XT	56	1345	NA	NA

Videocard Name	Passmark G3D Mark (higher is better)	Rank (lower is better)	Videocard Value (higher is better)	Price (USD)
Radeon X550XTX	70	1299	NA	NA
RADEON X600 256MB HyperMemory	58	1341	NA	NA
RADEON X600XT	91	1248	NA	NA
RADEON X700	71	1295	NA	NA
RADEON X700 PRO	75	1286	NA	NA
RADEON X700 SE	71	1297	NA	NA
RADEON X800 GT	84	1267	NA	NA
RADEON X800 GTO	76	1284	NA	NA
RADEON X800 PRO	64	1320	NA	NA
RADEON X800 PRO/GTO	73	1292	NA	NA
RADEON X800 XL	69	1302	NA	NA
RADEON X800 XT	97	1232	NA	NA
RADEON X800GT	79	1283	NA	NA
RADEON X850 PRO	72	1293	NA	NA
RADEON X850 XT	81	1280	NA	NA
RADEON X850 XT Platinum Edition	81	1274	NA	NA
Radeon Xpress 1100	33	1418	NA	NA
Radeon Xpress 1150	29	1433	NA	NA
Radeon Xpress 1200	35	1409	NA	NA
Radeon Xpress 1250	42	1383	NA	NA
Radeon Xpress 1270	26	1444	NA	NA
RADEON XPRESS 200	29	1434	NA	NA
RADEON XPRESS 200M	22	1461	NA	NA
RadeonT R5 430	1112	415	NA	NA
Videocard Name	Passmark G3D Mark (higher is better)	Rank (lower is better)	Videocard Value (higher is better)	Price (USD)
RadeonT R7 450	2186	237	NA	NA
RAGE 128 PRO AGP 4X TMDS	1	1627	NA	NA
Rage Fury Pro/Xpert 2000 Pro	3	1598	NA	NA
Red Hat QXL controller	31	1426	NA	NA
RGH Drivers v3	11	1497	NA	NA
RIVA TNT2 Model 64/Model 64 Pro	3	1580	NA	NA
RIVA TNT2/TNT2 Pro	3	1591	NA	NA
RV530 PRO	118	1177	NA	NA
Ryzen 5 2500U with Radeon Vega	1495	323	NA	NA
Ryzen 7 2700U with Radeon Vega	1641	304	NA	NA
S3 Chrome 430 ULP	39	1395	NA	NA
S3 Chrome S25 DDR2	18	1472	NA	NA
S3 ProSavageDDR	1	1626	NA	NA
SAPPHIRE RADEON 9600 ATLANTIS	47	1368	NA	NA
SAPPHIRE Radeon X1550	61	1328	NA	NA
Sapphire RADEON X800 GT	112	1193	NA	NA
Sherry 1.3 for GMA 3150	1	1622	NA	NA
Sherry 1.3.2 beta for 945 chipsets	3	1581	NA	NA
SiS 630/730	1	1625	NA	NA
SiS 650_651_M650_M652_740	3	1589	NA	NA
SiS 651	2	1608	NA	NA
SiS 661FX	3	1579	NA	NA
SiS 661FX/GX Mirage	4	1570	NA	NA
SiS 661FX_760_741_M661FX_M760_M741	4	1563	NA	NA

Videocard Name	Passmark G3D Mark (higher is better)	Rank (lower is better)	Videocard Value (higher is better)	Price (USD)
SiS 741	4	1561	NA	NA
SiS 760	5	1544	NA	NA
SiS M661MX	4	1571	NA	NA
SiS M760GX	3	1577	NA	NA
SiS Mirage	4	1566	NA	NA
SiS Mirage 3	2	1621	NA	NA
SUMO 9640	650	723	NA	NA
SUMO 964A	497	872	NA	NA
Tesla C2050	3465	159	NA	NA
Tesla C2050 / C2070	3756	144	NA	NA
Tesla C2070	3077	177	NA	NA
Tesla C2075	3324	164	1.46	\$2,269.99*
Tesla M60	7233	59	NA	NA
TITAN V	14280	3	3.98	\$3,587.99
TITAN Xp COLLECTORS EDITION	15077	1	NA	NA
TRINITY DEVASTATOR MOBILE	699	676	NA	NA
Vanta/Vanta LT	3	1601	NA	NA
VIA Chrome9 HC IGP	4	1565	NA	NA
VIA Chrome9 HC IGP Family	3	1576	NA	NA
VIA Chrome9 HC IGP Family WDDM	3	1583	NA	NA
VIA Chrome9 HC IGP Prerelease WDDM 1.1	2	1609	NA	NA
VIA Chrome9 HC IGP WDDM	2	1607	NA	NA
VIA Chrome9 HC IGP WDDM 1.1	2	1605	NA	NA
VIA Chrome9 HCM IGP	1	1623	NA	NA
VIA Chrome9 HD IGP	11	1496	NA	NA
Videocard Name	Passmark G3D Mark (higher is better)	Rank (lower is better)	Videocard Value (higher is better)	Price (USD)
VIA/S3G Chrome 645/640 GPU	109	1199	NA	NA
VIA/S3G DeltaChrome IGP	3	1593	NA	NA
VIA/S3G KM400/KN400	4	1569	NA	NA
VIA/S3G UniChrome IGP	4	1567	NA	NA
VIA/S3G UniChrome Pro IGP	4	1552	NA	NA
VIA/S3G UniChromell	5	1527	NA	NA
VirtualBox Adapter for Windows 8+	420	923	NA	NA
VRVD5	10221	24	NA	NA
Wine Display Adapter	261	1027	NA	NA
Xabre	5	1542	NA	NA

* - Last price seen from our affiliates.

Ad closed by Google

Stop seeing this ad

Why this ad?

[Home] - [Searchable Video Card List] - [Graph Notes] - [30 Day Market Share]
 [High-End] - [Mid to High-End] - [Low to Mid-End] - [Low-End]
 [Common] - [Best Value] - [Direct Compute] - [GPU Mega Page]

